

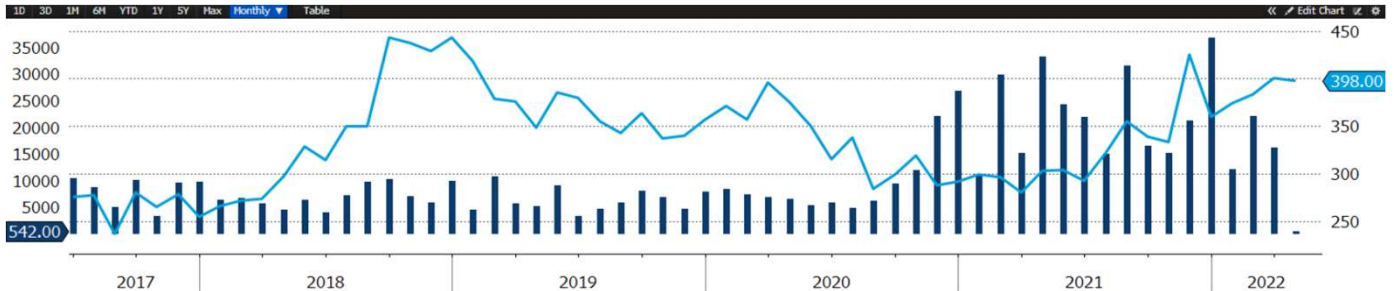
Grains Focus

Monthly update on the Australian grains market



Mar 2022,

ASX EC PRICE (May22 EXPIRY) AND AGGREGATE TRADED VOLUME (Monthly)



Source: Bloomberg

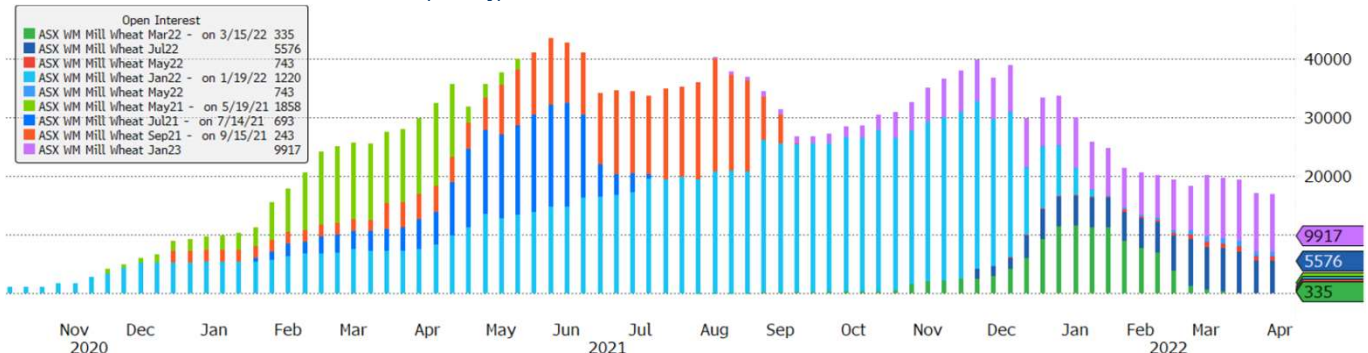
Start Date 20211201
End Date 20211231

SHORT_NAME	QUOTE_UNITS	FUT_MONTH_YR	1M_OPEN	1M_HIGH	1M_LOW	1M_CLOSE	Chg	%Chng	OPEN_INT
ASX WM Mill Wheat May22	AUD/MT	MAY 22	390.00	417	382	400	10.00	2.564	743
ASX WM Mill Wheat Jul22	AUD/MT	JUL 22	392.00	422.5	387.5	398	6.00	1.531	5576
ASX WM Mill Wheat Jan23	AUD/MT	JAN 23	392.00	425	390	400	8.00	2.041	9917
FEED BARLEY FUT May22	AUD/MT	MAY 22	271.50	325	271.5	322.5	51.00	18.785	0
FEED BARLEY FUT Sep22	AUD/MT	SEP 22	274.50	335	274.5	332.5	58.00	21.129	0
FEED BARLEY FUT Jan23	AUD/MT	JAN 23	289.00	346.5	289	344	55.00	19.031	375
WHEAT FUTURE(CBT) May22	USd/bu.	MAY 22	934.50	1363.5	932.25	1006	71.50	7.651	114194
KC HRW WHEAT FUT May22	USd/bu.	MAY 22	953.00	1299.5	951.25	1029.75	76.75	8.054	60554
RED WHEAT FUT MGE May22	USd/bu.	MAY 22	991.00	1211.75	986.5	1079.5	88.50	8.930	22404
MILL WHEAT EURO May22	EUR/MT	MAY 22	328.25	424	326	369.5	41.25	12.567	109480
CORN FUTURE May22	USd/bu.	MAY 22	694.25	782.75	692.75	748.75	54.50	7.850	428432
SOYBEAN FUTURE May22	USd/bu.	MAY 22	1641.50	1734	1613.5	1618.25	-23.25	-1.416	243026
AUD-USD X-RATE	Spot		0.7127	0.7263	0.7001	0.7317	0.02	2.666	

Source: Bloomberg

OPEN INTEREST SUMMARY

ASX EAST COAST WHEAT OPEN INTEREST (Weekly)



Source: Bloomberg

SHORT_NAME	OI beginning	OI ending	Monthly Chg	% Chg
ASX WM Mill Wheat May22	562	803	241	42.88
ASX WM Mill Wheat Jul22	5986	5526	-460	-7.68
ASX WM Mill Wheat Jan23	7858	10146	2288	29.12
ASX WM Mill Wheat Jan24	25	125	100	400.00
	0	0	0	0.00
	0	0	0	0.00

Source: Bloomberg

ASX EC AGGREGATE OPEN INTEREST (Monthly)

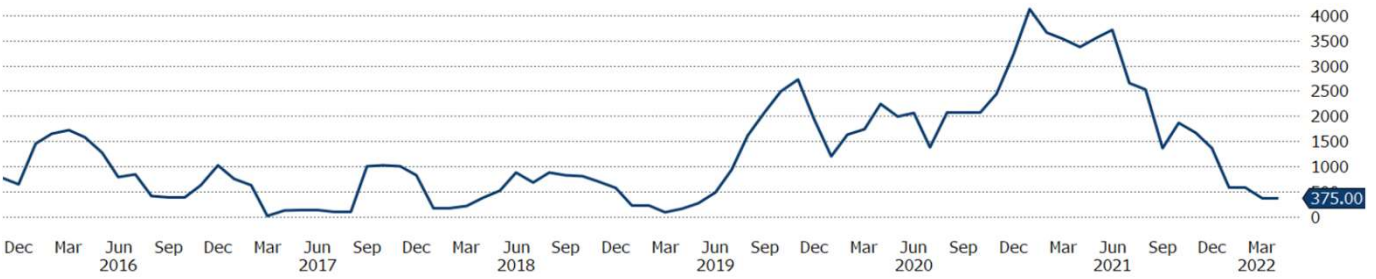


ASX BARLEY

SHORT_NAME	OPEN_INT
FEED BARLEY FUT May22	0
FEED BARLEY FUT Sep22	0
FEED BARLEY FUT Jan23	375
FEED BARLEY FUT Mar23	0

Source: Bloomberg

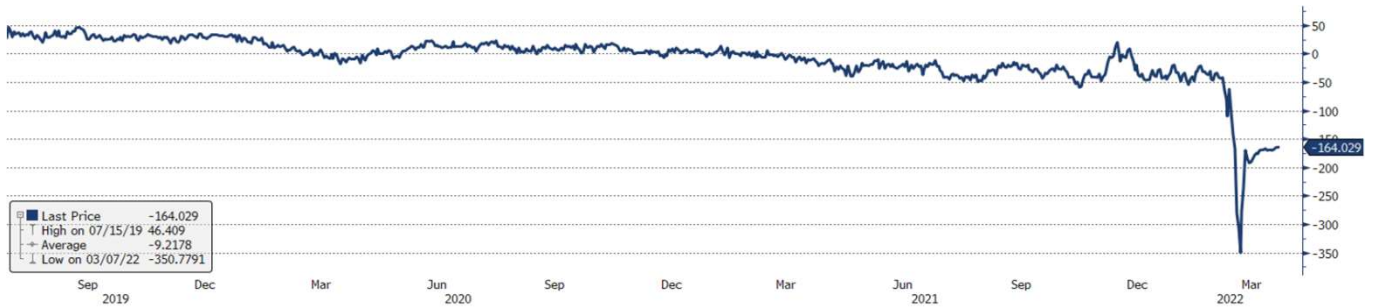
ASX BARLEY AGGREGATE OPEN INTEREST (Monthly)

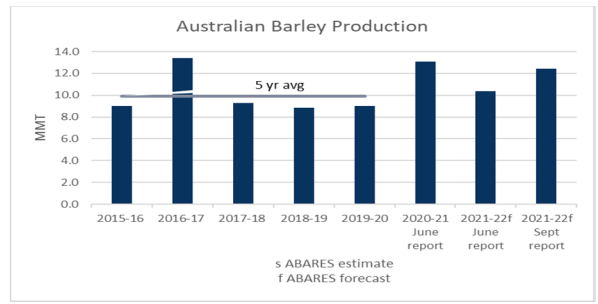
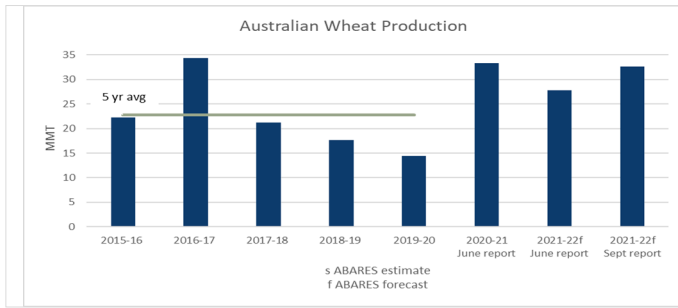


ASX GRAIN SPREAD

Historically global grain markets are closely correlated, recently ASX Wheat prices have risen whilst other markets remained level.

ASX JAN WHEAT minus CBOT DEC WHEAT (AUD/MT)







Source: ABARES 2015 , Australian crop report, Australian Bureau of Agricultural and Resource Economics and Services, Canberra, December, CC by 3.0 licensed under a Creative Commons Attribution 3.0 Australia License available from <http://creativecommons.org/licenses/by/3.0/au/legalcode>

Further Information

Email grainfutures@asx.com.au
 Visit asx.com.au/grainfutures
 Live Market Prices asxgrains.com.au

 Follow us @ASX
 Follow us on LinkedIn

This document provides general information only and may be subject to change at any time without notice. ASX Pty Limited ABN 42 004 523 782. All rights reserved 2020. Operations Pty Limited (ABN 42 004 523 782) and its related bodies corporate ('ASX') make no representation or warranty with respect to the accuracy, reliability or completeness of this information. To the extent permitted by law, ASX and its employees, officers and contractors shall not be liable for any loss or damage arising in any way, including by way of negligence, from or in connection with any information provided or omitted, or from anyone acting or refraining to act in reliance on this information. The trademarks listed below are trademarks of ASX. Where a mark is indicated as a registered mark it is registered in Australia and may also be registered in other countries. Nothing contained in this document should be construed as being any license or right of use of any trade mark contained within the document. ASX Trade24®. © Copyright 2020