



Hybrids:

Monthly Update - May 2021



Month: May-21 Trading days: 21 Period ending: Monday, 31 May 2021

Snapshot by Category

	Number listed	Market Cap (\$m)	Trades Total (#)	Trades per day (#)	Volume (#)	Value \$m
Australian Segment Bond Segment						
Convertible Preference Shares and Capital Notes	44	43790.9	28,385	1,352	5,780,772	642.0
Convertible Bonds	6	318.0	241	11	661,376	6.0
Hybrid Securities	4	2875.2	2,105	100	222,344	56.2
Total	54	46984.12	30,731	1,463	6,664,492	704.2

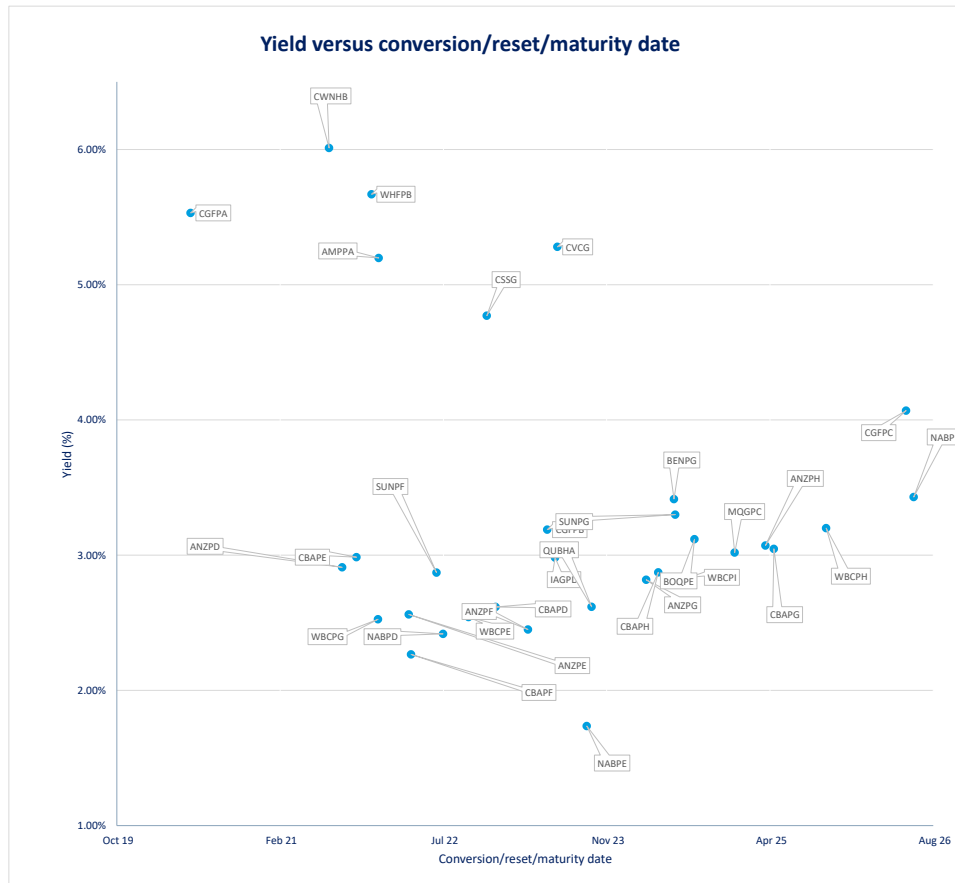
Recent Listings

Entity	ASX Code	Size (\$m)	Type	Listing Date	Issue Price	Maturity / Conv / Reset	Interest Rate / Dividend	Distribution Frequency	Last Price
Naos Emerging Opportunities Company	NCCGA	23.0	Convertible Bonds	20-Apr-2021	\$100.00	30-Sep-2028	4.50%	S/A	\$100.60
Commonwealth Bank of Australia	CBAPJ	1,180.0	Convertible Preference Share	06-Apr-2021	\$100.00	20-Oct-2026	2.79%	Qtrly	\$100.60
Macquarie Group Limited	MOGPE	725.4	Convertible Preference Share	18-Mar-2021	\$100.00	18-Sep-2027	2.93%	Qtrly	\$100.30
Australian Unity Limited	AYUPA	120.0	Convertible Preference Share	04-Jan-2021	\$100.00	N/A	5.00%	S/A	\$109.00
National Australia Bank Limited	NABPH	2,386.0	Convertible Preference Share	18-Dec-2020	\$100.00	17-Dec-2027	3.53%	Qtrly	\$105.00
Westpac Banking Corporation	WBCPJ	1,722.9	Convertible Preference Share	07-Dec-2020	\$100.00	22-Mar-2027	3.43%	Qtrly	\$104.11
Glennon Small Companies Limited	GC1PA	0.6	Convertible Preference Share	07-Dec-2020	\$1.00	30-Sep-2030	5.60%	S/A	\$10.60
Bank of Queensland Limited	BOQPF	260.0	Convertible Preference Share	01-Dec-2020	\$100.00	14-May-2027	3.84%	Qtrly	\$104.30
Bendigo and Adelaide Bank Limited	BENPH	502.4	Convertible Preference Share	01-Dec-2020	\$100.00	15-Jun-2027	3.84%	Qtrly	\$104.87
Challenger Limited	CGFPC	385.0	Convertible Preference Share	26-Nov-2020	\$100.00	25-May-2026	4.64%	Qtrly	\$106.30
Naos Ex-50 Opportunities Company Lim	NACGA	17.5	Convertible Bonds	20-Nov-2020	\$100.00	30-Sep-2025	5.50%	S/A	\$106.00
Macquarie Bank Limited	MBLPC	641.0	Convertible Preference Share	03-Jun-2020	\$100.00	N/A	4.73%	Qtrly	\$109.00
AMP Limited	AMPPB	275.0	Convertible Preference Share	24-Dec-2019	\$100.00	16-Dec-2025	4.53%	Qtrly	\$97.00
Suncorp Group Limited	SUNPH	389.0	Convertible Preference Share	18-Dec-2019	\$100.00	17-Jun-2026	3.03%	Qtrly	\$101.16

*\$BBSW = Bank Bill Swap Rate
*As of the date of this report this security has not traded, the Last Price reflects the Issue Price

Most Actively Traded Securities by Value

ASX Code	Security Type	Value (\$)	%Value	Volume	%Volume
CBAPD	Convertible Preference Shares and Capital Notes	55,939,770	7.94%	553,137	8.30%
ANZPG	Convertible Preference Shares and Capital Notes	31,330,859	4.45%	292,262	4.39%
CBAPJ	Convertible Preference Shares and Capital Notes	30,952,462	4.40%	308,044	4.62%
NABPH	Convertible Preference Shares and Capital Notes	28,877,324	4.10%	277,682	4.17%
WBCPG	Convertible Preference Shares and Capital Notes	25,301,668	3.59%	247,770	3.72%
Total Top 5		172,402,083.71	24.48%	1,678,895	25.19%





Hybrids:

Monthly Update - May 2021



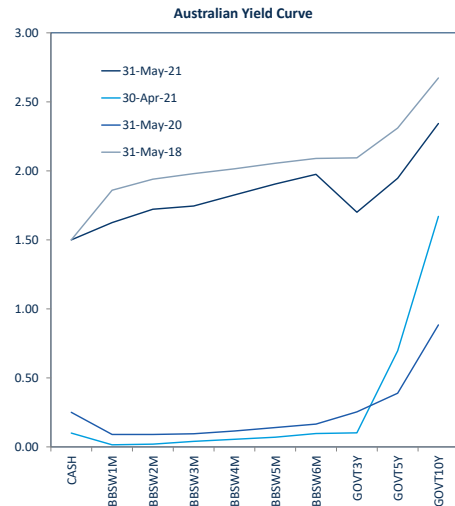
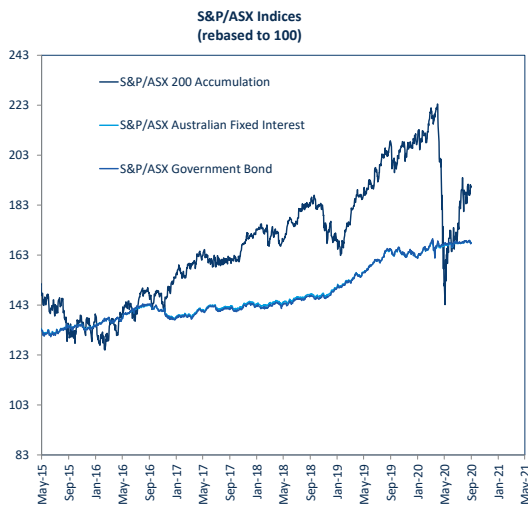
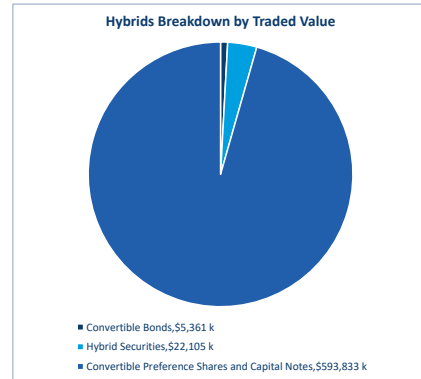
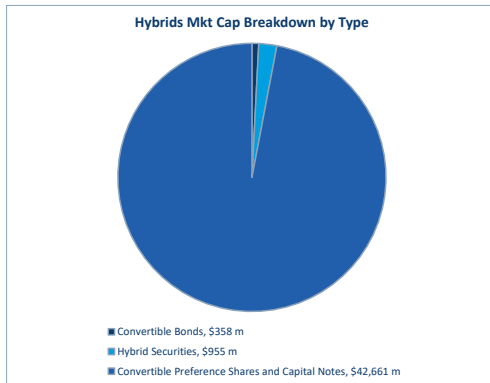
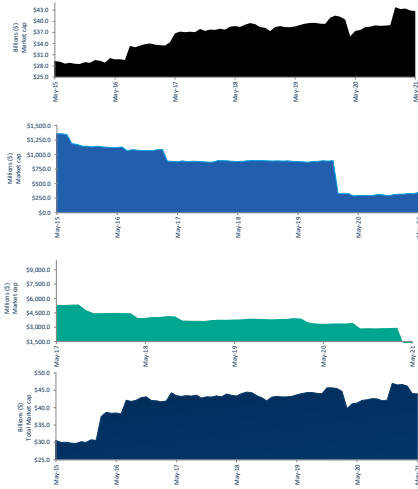
Performance and Trading Activity Breakdown by Category

	Last 12 months			Last month	
	May-20	May-21	% change	Dec-20	% change
Convertible Preference Shares and Capital Notes					
Market Cap (\$m)	37,650.3	42,660.9	13.3%	43,790.9	2.6%
Number listed (actual)	41	49	19.5%	44	-10.2%
Monthly volume	5,808,899	5,780,772	-0.5%	6,352,667	9.9%
Monthly trades	25,273	27,498	8.8%	28,385	3.2%
Monthly value (\$m)	575.8	593.8	3.1%	647.0	8.1%

	Last 12 months			Last month	
	May-20	May-21	% change	Dec-20	% change
Convertible Bonds					
Market Cap (\$m)	296.0	358.1	21.0%	318.0	-11.2%
Number listed (actual)	4	6	50.0%	6	0.0%
Monthly volume	1,330,741	661,376	-50.3%	462,099	-30.1%
Monthly trades	249	332	33.3%	241	-27.4%
Monthly value (\$m)	3.6	5.4	50.8%	6.0	11.8%

	Last 12 months			Last month	
	May-20	May-21	% change	Dec-20	% change
Hybrid Securities					
Market Cap (\$m)	3,352.9	954.9	-71.5%	2,875.2	201.1%
Number listed (actual)	5	3	-40.0%	4	33.3%
Monthly volume	346,041	222,344	-35.7%	581,827	161.7%
Monthly trades	1,605	779	-51.5%	2,105	170.2%
Monthly value (\$m)	31.9	22.1	-30.8%	56.2	154.2%

	Last 12 months			Last month	
	May-20	May-21	% change	Dec-20	% change
Total Hybrid Market					
Market Cap (\$m)	41,299.2	43,973.9	6.5%	46,984.1	6.8%
Number listed (actual)	50	58	16.0%	54	-6.9%
Monthly volume	7,485,681	6,664,492	-11.0%	7,396,593	11.0%
Monthly trades	27,127	28,609	5.5%	30,731	7.4%
Monthly value (\$m)	611.3	621.3	1.6%	704.2	13.3%





Spotlight on Hybrids:

Monthly update - May 2021



ASX Profiles

ASX Code	Issuer	Description
Convertible Bonds		
CAMG	Clime Capital Limited	Convert Bond 6.25% 30-11-21 Qly Red
CVCG	CVC Limited	Convert Bond 3-8bww+3.75% 22-6-23 Qly Non-Cum Red
CSIG	Clear Sea Seaford Limited	Convert Bond 8.00% 31-10-21 Semi-Cum Red
KBCPA	Keybridge Capital Limited	Convert Bond 7.00% 31-07-21 Qly Cum Red
NACGA	Nass Ex-50 Opportunities Company Limited	Convert Bond 5.50% 30-09-27 Semi Step T-09-25
NCCGA	Nass Emerging Opportunities Company Limited	Convert Bond 4.50% 30-09-28 Semi Non-Cum Red Step
NFIG	Nufarm Finance (NZ) Limited	Convert Bond 6-8bww+1.50% Perp Sub Non-Cum Exh Step
Hybrid Securities		
BNHB	Bendigo and Adelaide Bank Limited	Hybrid 3-8bww+1.00% Perp Sub Cum Red
CNWB	Crown Resources Limited	Hybrid 3-8bww+1.25% Perp Sub Cum Red T-07-21
QUBHA	Dube Holdings Limited	Hybrid 3-8bww+3.90% 05-10-23 Sub Cum
Converting Preference Shares and Capital Notes		
AMPPA	AMP Limited	Cap Note 3-8bww+5.10% Perp Non-Cum Red T-12-21
AMPPB	AMP Limited	Cap Note 3-8bww+4.50% Perp Non-Cum Red T-12-25
ANZP	Australia and New Zealand Banking Group Limited	Cap Note 3-8bww+3.40% Perp Non-Cum Red T-09-21
ANZPE	Australia and New Zealand Banking Group Limited	Cap Note 3-8bww+3.25% Perp Non-Cum Red T-06-24
ANZPF	Australia and New Zealand Banking Group Limited	Cap Note 3-8bww+3.60% Perp Non-Cum Red T-03-23
ANZPG	Australia and New Zealand Banking Group Limited	Cap Note 3-8bww+4.70% Perp Non-Cum Red T-03-24
ANZPH	Australia and New Zealand Banking Group Limited	Cap Note 3-8bww+3.80% Perp Non-Cum Red T-03-25
AYUPA	Australian Unity Limited	Mid Cap Note 5.00% Perp Semi Non-Cum
BNFP	Bendigo and Adelaide Bank Limited	Cnv Pref 6-8bww+4.00% Perp Non-Cum Red T-06-21
BNPG	Bendigo and Adelaide Bank Limited	Cnv Pref 3-8bww+3.75% Perp Non-Cum Red T-06-24
BNPH	Bendigo and Adelaide Bank Limited	Cap Note 3-8bww+3.00% Perp Non-Cum Red T-06-27
CBDF	Commonwealth Bank of Australia	Cap Note 3-8bww+3.80% Perp Non-Cum Red T-06-24
BCDF	Bank of Queensland Limited	Cap Note 3-8bww+3.80% Perp Non-Cum Red T-05-27
CBAD	Commonwealth Bank of Australia	Cap Note 3-8bww+2.80% Perp Non-Cum Red T-12-22
CBAPF	Commonwealth Bank of Australia	Cap Note 3-8bww+5.20% Perp Non-Cum Red T-10-21
CBAPG	Commonwealth Bank of Australia	Cap Note 3-8bww+3.90% Perp Non-Cum Red T-03-22
CBAPH	Commonwealth Bank of Australia	Cap Note 3-8bww+3.40% Perp Non-Cum Red T-04-25
CBAPH	Commonwealth Bank of Australia	Cap Note 3-8bww+3.00% Perp Non-Cum Red T-06-27
CBAPF	Commonwealth Bank of Australia	Cap Note 3-8bww+3.60% Perp Non-Cum Red T-06-27
CBAPJ	Commonwealth Bank of Australia	Cap Note 3-8bww+2.75% Perp Non-Cum Red T-10-26
CGFA	Challenger Limited	Cnv Pref 3-8bww+3.40% Perp Sub Non-Cum Red T-05-22
CGFPB	Challenger Limited	Cap Note 3-8bww+4.40% Perp Non-Cum Red T-05-23
CGFCF	Challenger Limited	Cap Note 3-8bww+4.60% Perp Non-Cum Red T-05-26
CNPA	Carlton Investments Limited	7% Cumulative Preference
IAGPD	Insurance Australia Group Limited	Cap Note 3-8bww+4.70% Perp Non-Cum Red T-06-23
GLCPA	Gleason Small Companies Limited	Cnv Pref 5.60% 30-9-30 Semi Cum Exh Red Res T-3-21
MBQPC	Macquarie Bank Limited	Cap Note 3-8bww+4.20% Perp Non-Cum Red T-12-25
MOGFC	Macquarie Group Limited	Cap Note 3-8bww+4.00% Perp Non-Cum Red T-12-24
MOGPD	Macquarie Group Limited	Cap Note 3-8bww+4.15% Perp Non-Cum Red T-09-26
MOGPE	Macquarie Group Limited	Cap Note 3-8bww+2.90% Perp Non-Cum Red T-09-27
NABPD	National Australia Bank Limited	Cap Note 3-8bww+4.95% Perp Non-Cum Red T-07-22
NABPE	National Australia Bank Limited	Cap Note 3-8bww+2.20% 20-09-28 Cum Red T-09-23
NABPF	National Australia Bank Limited	Cap Note 3-8bww+4.00% Perp Non-Cum Red T-06-26
NABPH	National Australia Bank Limited	Cap Note 3-8bww+3.50% Perp Non-Cum Red T-12-27
RHCPA	Ramsay Health Care Limited	Trans Pref 6-8bww+4.85% Perp Sub Red T-10-10
SBKHB	Suncorp-Metway Limited	Cap Note 3-8bww+0.75% Perp Cum
SLPA	Sietel Limited	5.0% Cumulative Preference
SUNPF	Suncorp Group Limited	Cap Note 3-8bww+4.10% Perp Non-Cum Red T-06-22
SUNPG	Suncorp Group Limited	Cap Note 3-8bww+3.65% Perp Non-Cum Red T-06-24
SUNPH	Suncorp Group Limited	Cap Note 3-8bww+3.00% Perp Non-Cum Red T-06-26
USPFA	US Masters Residential Property Fund	Cnv Pref 6.25% Perp Semi Sub Cum Step T-01-23
WBCPE	Westpac Banking Corporation	Cap Note 3-8bww+3.05% Perp Non-Cum Red T-09-22
WBCPG	Westpac Banking Corporation	Cap Note 3-8bww+4.90% Perp Non-Cum Red T-12-21
WBCPH	Westpac Banking Corporation	Cap Note 3-8bww+3.20% Perp Non-Cum Red T-09-25
WBCPI	Westpac Banking Corporation	Cap Note 3-8bww+3.70% Perp Non-Cum Red T-07-24
WBCPJ	Westpac Banking Corporation	Cap Note 3-8bww+3.40% Perp Non-Cum Red T-03-27
WHIPA	Whitefield Limited	8.0% Cumulative Preference
WHFPB	Whitefield Limited	Convert Pref 7.5% 30-11-21 Semi Sub Non-Cum Exh Step

Detail

ASX Listed Date	Maturity / Conv / Reset	Coupon ²	Payment Frequency	Announced Ex Date	Announced Payment Date
08-Dec-17	30-Nov-21	6.25%	Qtrly	01-Jun-21	09-Jun-21
25-Jun-18	22-Jun-23	7.75%	Qtrly	21-Jun-21	30-Jun-21
18-Nov-19	18-Nov-23	8.00%	S/A	-	-
22-Jun-15	31-Jul-20	7.00%	Qtrly	-	-
20-Nov-20	30-Sep-25	5.50%	S/A	-	-
20-Apr-21	30-Sep-28	4.50%	S/A	-	-
27-Nov-06	N/A	4.00%	S/A	06-Oct-21	15-Oct-21
29-Sep-08	N/A	1.04%	Qtrly	13-Aug-21	31-Aug-21
24-Apr-15	23-Jul-21	1.50%	Qtrly	04-Jun-21	15-Jun-21
06-Oct-16	05-Oct-23	3.94%	Qtrly	24-Jun-21	05-Jul-21
01-Dec-15	22-Dec-21	5.13%	Qtrly	10-Jun-21	22-Jun-21
24-Dec-19	16-Dec-25	4.53%	Qtrly	07-Jun-21	16-Jun-21
08-Aug-13	01-Sep-21	3.47%	S/A	23-Aug-21	01-Sep-21
01-Apr-14	24-Mar-22	3.33%	S/A	15-Sep-21	24-Sep-21
08-Mar-15	24-Mar-21	3.68%	S/A	15-Sep-21	24-Sep-21
28-Sep-16	20-Mar-24	4.73%	Qtrly	10-Jun-21	23-Jun-21
29-Sep-17	20-Mar-25	3.83%	Qtrly	10-Jun-21	23-Jun-21
04-Jan-21	N/A	5.00%	S/A	5	11
16-Jun-15	15-Jun-21	4.02%	S/A	5	285.63
14-Dec-17	13-Jun-24	3.79%	Qtrly	04-Jun-21	15-Jun-21
01-Dec-20	15-Jun-27	3.84%	Qtrly	04-Jun-21	15-Jun-21
01-Dec-19	15-Aug-27	3.76%	Qtrly	27-Jul-21	16-Aug-21
01-Dec-10	14-May-27	2.84%	Qtrly	27-Jul-21	16-Aug-21
02-Oct-14	15-Dec-22	2.84%	Qtrly	04-Jun-21	15-Jun-21
31-Mar-16	15-Oct-21	5.24%	Qtrly	04-Jun-21	15-Jun-21
03-Apr-17	31-Mar-22	3.94%	Qtrly	04-Jun-21	15-Jun-21
09-Apr-18	15-Apr-25	3.44%	Qtrly	04-Jun-21	15-Jun-21
18-Dec-18	26-Apr-24	3.74%	Qtrly	04-Jun-21	15-Jun-21
15-Nov-19	20-Apr-27	3.76%	Qtrly	15-Sep-21	24-Sep-21
06-Apr-21	20-Oct-26	2.79%	Qtrly	04-Jun-21	15-Jun-21
10-Oct-14	25-May-20	3.44%	Qtrly	16-Aug-21	25-Aug-21
10-Apr-17	22-May-23	4.44%	Qtrly	12-Aug-21	23-Aug-21
26-Nov-20	25-May-26	4.64%	Qtrly	16-Aug-21	25-Aug-21
15-Mar-86	N/A	7.00%	Annual	5	0.18
23-Dec-16	15-Jun-23	4.74%	Qtrly	04-Jun-21	15-Jun-21
07-Dec-20	30-Sep-30	5.60%	S/A	5	4.04
03-Jun-20	N/A	4.72%	Qtrly	03-Jun-21	21-Jun-21
08-Jun-18	16-Dec-24	4.04%	Qtrly	5	1,058.60
28-Mar-19	10-Sep-26	4.19%	Qtrly	01-Jun-21	10-Jun-21
18-Mar-21	18-Sep-27	2.93%	Qtrly	01-Jun-21	18-Jun-21
08-Jul-16	07-Jul-22	4.99%	Qtrly	28-Jun-21	07-Jul-21
21-Mar-17	20-Sep-23	2.23%	Qtrly	10-Jun-21	23-Jun-21
21-Mar-19	17-Jun-26	4.03%	Qtrly	08-Jun-21	17-Jun-21
28-Dec-17	10-Dec-27	3.53%	Qtrly	08-Jun-21	17-Jun-21
24-May-05	N/A	4.95%	S/A	27-Sep-21	20-Oct-21
24-Dec-10	N/A	0.79%	Qtrly	5	71.54
15-Mar-86	N/A	5.00%	Annual	5	0.08
08-Mar-17	17-Jun-22	4.13%	Qtrly	01-Jun-21	17-Jun-21
27-Nov-17	17-Jun-24	3.68%	Qtrly	01-Jun-21	17-Jun-21
28-Dec-17	17-Jun-26	3.03%	Qtrly	01-Jun-21	17-Jun-21
28-Dec-17	01-Jun-23	6.25%	S/A	5	120.24
24-Jun-14	23-Sep-22	3.08%	Qtrly	11-Jun-21	23-Jun-21
01-Jul-16	20-Dec-21	4.94%	Qtrly	21-Jun-21	30-Jun-21
14-Mar-18	22-Sep-25	3.23%	Qtrly	01-Jun-21	22-Jun-21
19-Dec-18	31-Jul-24	3.74%	Qtrly	09-Jun-21	18-Jun-21
07-Dec-20	22-Mar-27	3.43%	Qtrly	10-Jun-21	22-Jun-21
15-Mar-86	N/A	0.00%	S/A	5	0.02
14-Aug-12	30-Nov-21	n/a	n/a	5	32.62

Activity

Mkt Cap (\$m)	Traded Value (\$)	Traded Volume	Number of Trades	Spread %	Monthly Liquidity % ³
\$ 29.27	\$ 288,887.41	294,062	28	0.4496	0.99%
\$ 58.80	\$ 852,325.25	8,735	61	0.6731	1.02%
\$ 120.27	\$ 328,912.73	315,323	28	2.4408	3.20%
\$ 0.16	\$ -	-	-	-	n/a
\$ 18.55	\$ 120,343.40	1,132	5	0.3709	0.65%
\$ 23.14	\$ 1,328,210.18	13,164	64	n/a	5.74%
\$ 218.12	\$ 2,442,436.95	28,860	146	0.7277	1.12%
\$ 19.61	\$ 120,930.61	1,310	34	2.4118	0.62%
\$ 159.92	\$ 16,071,336.05	163,834	476	0.1355	2.59%
\$ 315.37	\$ 5,913,151.24	57,200	289	0.3143	1.87%
\$ 269.64	\$ 4,757,142.95	47,366	301	0.2333	1.76%
\$ 266.75	\$ 5,999,505.00	61,540	333	0.1966	2.25%
\$ 1,131.20	\$ 17,575,235.86	173,905	782	0.0969	1.68%
\$ 1,630.14	\$ 24,636,968.37	184,724	1,020	0.2947	1.51%
\$ 999.48	\$ 11,508,831.89	115,562	736	0.1560	1.19%
\$ 1,733.92	\$ 31,308,858.58	292,262	1,140	0.1449	1.83%
\$ 981.36	\$ 8,168,184.10	77,274	549	0.2002	0.83%
\$ 130.80	\$ 1,029,321.47	9,509	55	0.4119	0.79%
\$ 285.63	\$ 3,377,771.43	33,365	252	0.1956	1.18%
\$ 330.94	\$ 7,434,602.75	72,204	418	0.1176	2.25%
\$ 526.91	\$ 6,424,815.50	63,856	436	0.2815	1.22%
\$ 999.48	\$ 11,508,831.89	115,562	736	0.1560	1.19%
\$ 271.18	\$ 4,379,640.89	42,182	209	0.2322	1.62%
\$ 3,032.40	\$ 55,939,770.31	553,137	1,913	0.0790	1.84%
\$ 1,478.42	\$ 14,816,407.83	143,321	657	0.0955	1.00%
\$ 1,676.90	\$ 22,859,719.22	224,009	888	0.1013	1.36%
\$ 1,421.78	\$ 17,127,981.51	164,744	781	0.1951	1.20%
\$ 1,655.35	\$ 24,636,968.37	239,886	860	0.1223	1.49%
\$ 1,686.64	\$ 22,629,205.09	222,207	1,077	0.1488	1.34%
\$ 1,187.08	\$ 30,952,462.47	308,044	1,142	n/a	2.61%
\$ 47.71	\$ 636,000.22	6,342	72	0.4268	1.33%
\$ 472.65	\$ 7,596,133.11	73,907	439	0.2056	1.61%
\$ 409.26	\$ 3,657,541.60	34,719	213	0.1907	0.89%
\$ 0.18	\$ -	-	-	-	n/a
\$ 423.44	\$ 7,635,470.43	72,886	462	0.1440	1.80%
\$ 4.04	\$ 996.40	94	1	5.7058	0.02%
\$ 698.72	\$ 9,658,207.96	88,777	588	n/a	1.38%
\$ 1,058.60	\$ 9,975,580.98	94,349	589	0.2431	0.94%
\$ 968.97	\$ 9,155,662.01	85,577	570	0.2447	0.94%
\$ 727.62	\$ 24,872,344.86	249,469	878	0.2002	3.43%
\$ 1,552.52	\$ 18,070,923.13	180,063	1,063	0.1059	1.20%
\$ 961.60	\$ 10,746,777.07	105,369	681	0.1914	1.12%
\$ 2,015.88	\$ 15,702,856.93	146,858	740	0.1610	0.78%
\$ 2,505.27	\$ 28,877,324.14	277,682	1,388	0.1255	1.15%
\$ 270.14	\$ 5,056,023.91	48,898	402	0.2320	1.87%
\$ 71.54	\$ 4,990,396.25	44,194	78	0.4463	6.14%
\$ 0.08	\$ -	-	-	-	n/a
\$ 383.25	\$ 7,410,350.76	72,096	396	0.1798	1.93%
\$ 386.70	\$ 4,022,734.72	38,937	208	0.1473	1.04%
\$ 393.51	\$ 8,135,330.05	80,508	334	0.2194	2.07%
\$ 120.24	\$ 1,730,338.12	28,512	146	1.6036	1.44%
\$ 1,328.66	\$ 19,268,545.56	189,647	877	0.1097	1.45%
\$ 1,738.50	\$ 25,301,668.11	247,770	907	0.0758	1.45%
\$ 1,747.81	\$ 17,728,587.57	171,855	882	0.1524	1.01%
\$ 1,489.23	\$ 21,886,178.50	209,538	813	0.1374	1.47%
\$ 1,793.75	\$ 17,988,254.63	167,327	954	0.1553	0.97%
\$ 0.02	\$ 0.02	-	-	-	n/a
\$ 32.62	\$ 173,781.64	1,687	10	1.0378	0.53%

Prices

Last *	Year High	Year Low	Yield (%) ¹	1 Month Price Return	1 Year Price Return	3 Year Price Return	5 Year Price Return
0.99	1.00	0.96	0.00%	0.71%	0.20%	-2.18%	n/a
98.00	98.00	80.00	5.28%	1.02%	12.00%	n/a	n/a
1.03	1.14	1.01	4.77%	-3.21%	1.48%	n/a	n/a
0.94	0.96	0.94	0.00%	-0.00%	-1.57%	-1.05%	-2.08%
106.00	107.20	105.50	-0.92%	n/a	n/a	n/a	n/a
100.60	103.90	100.00	4.50%	-0.84%	n/a	n/a	n/a
86.90	87.00	75.65	7.07%	5.17%	8.69%	0.70%	7.27%
93.00	95.00	75.80	1.20%	8.14%	23.47%	22.37%	38.81%
98.40	98.50	85.00	6.01%	0.15%	1.55%	-1.24%	26.07%
103.40	110.00	100.40	2.62%	-0.58%	3.04%		