



Hybrids:

Monthly Update - July 2023



Month: Jul-23

Trading days: 21

Period ending: Monday, 31 July 2023

Snapshot by Category

Australian Segment Bond Segment	Number listed	Market Cap (\$m)	Trades Total (#)	Trades per day (#)	Volume (#)	Value \$m
Convertible Preference Shares and Capital Notes	47	40533.5	41,909	1,996	6,316,941	815.6
Convertible Bonds	9	352.8	328	16	322,320	3.0
Hybrid Securities	1	306.8	384	18	26,840	4.0
Total	57	41193.09	42,621	2,030	6,666,101	822.7

Recent Listings

Entity	ASX Code	Size (\$m)	Type	Listing Date	Issue Price	Maturity / Conv / Reset	Interest Rate / Dividend	Distribution Frequency	Last Price
Decmil Group Limited	DCGPA	26.3	Convertible Preference Share	25-Jul-2023	\$0.20	21-Jul-2026	n/a	n/a	\$0.20
Challenger Limited	CGFPD	350.0	Convertible Preference Share	06-Apr-2023	\$100.00	N/A	7.24%	Qtrly	\$103.10
Insurance Australia Group Limited	IAGPE	495.0	Convertible Preference Share	23-Dec-2022	\$99.00	29-Jun-2029	7.74%	Qtrly	\$103.52
Commonwealth Bank of Australia	CBAPL	1,777.4	Convertible Preference Share	16-Nov-2022	\$100.00	16-Jun-2029	7.09%	Qtrly	\$101.85
Bank of Queensland Limited	BOQPG	400.0	Convertible Preference Share	15-Nov-2022	\$100.00	15-May-2027	7.64%	Qtrly	\$102.30
Westpac Banking Corporation	WBCPL	1,509.1	Convertible Preference Share	21-Jul-2022	\$100.00	22-Sep-2028	7.68%	Qtrly	\$103.65
Macquarie Group Limited	MQGPF	750.0	Convertible Preference Share	18-Jul-2022	\$100.00	12-Sep-2029	7.92%	Qtrly	\$104.25
National Australia Bank Limited	NABPI	2,000.0	Convertible Preference Share	08-Jul-2022	\$100.00	17-Dec-2029	7.47%	Qtrly	\$102.82
Commonwealth Bank of Australia	CBAPK	1,750.0	Convertible Preference Share	01-Apr-2022	\$100.00	15-Jun-2029	6.99%	Qtrly	\$100.95
ECP Emerging Growth Limited	ECPGA	10.8	Convertible Bonds	19-Apr-2022	\$1.43	11-Apr-2027	5.50%	Qtrly	\$1.30
Australia and New Zealand Banking Gr	AN3PJ	1,310.0	Convertible Preference Share	21-Dec-2022	\$100.00	20-Mar-2029	5.91%	Qtrly	\$100.58
Global Masters Fund Limited	GFLGA	10.0	Convertible Bonds	29-Nov-2021	\$3.10	23-Nov-2024	5.50%	Qtrly	\$2.90
Mosaic Brands Limited	MOZG	14.6	Convertible Bonds	08-Oct-2021	\$1.00	07-Jul-2023	8.00%	Qtrly	\$0.85
Flagship Investments Limited	FSIGA	20.0	Convertible Bonds	04-Oct-2021	\$2.70	30-Sep-2024	5.50%	Qtrly	\$2.56

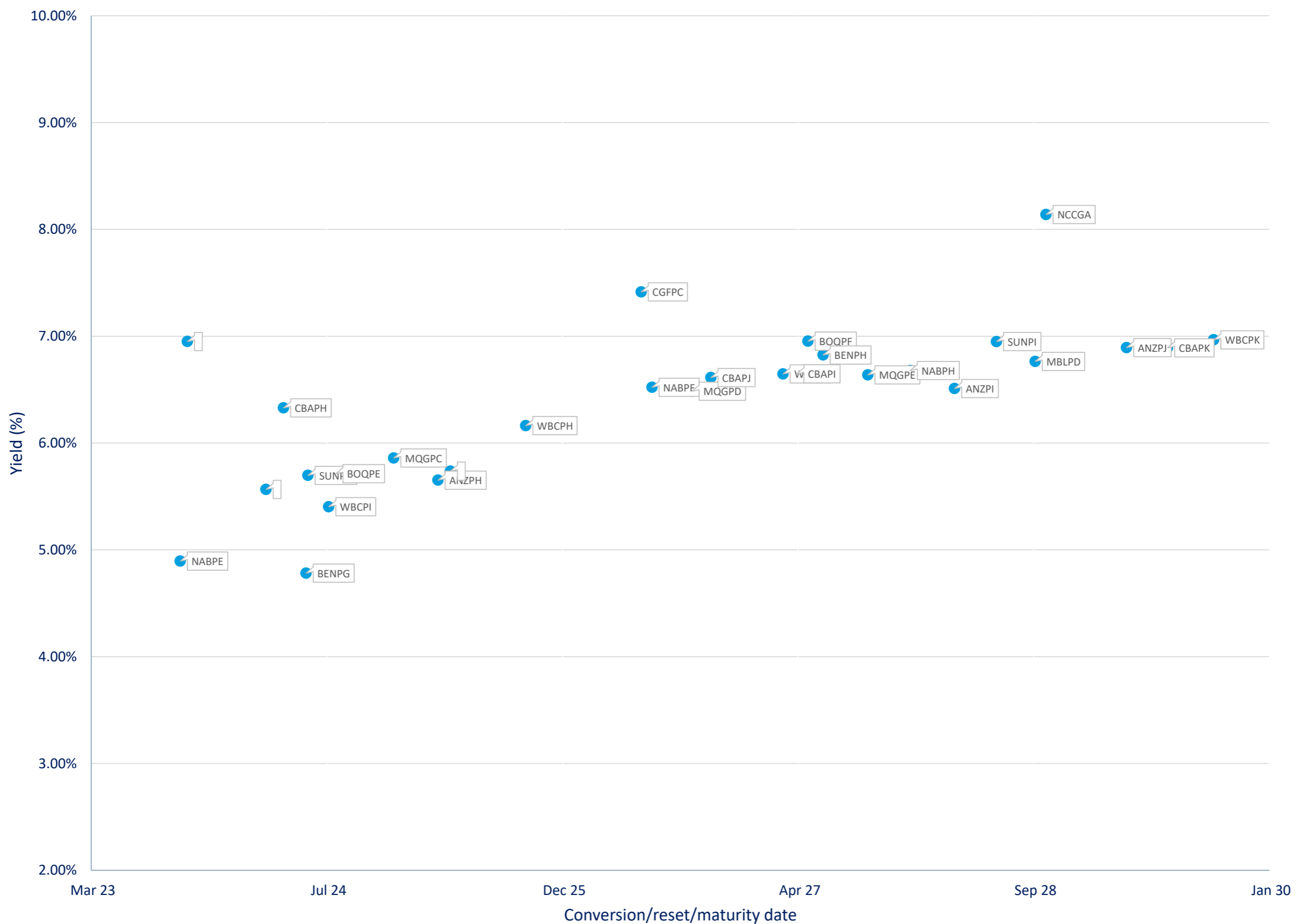
*BBSW = Bank Bill Swap Rate

* As of the date of this report this security has not traded, the Last Price reflects the Issue Price

Most Actively Traded Securities by Value

ASX Code	Security Type	Value (\$)	%Value	Volume	%Volume
NABPH	Convertible Preference Shares and Capital Notes	37,848,326	4.60%	366,768	5.50%
ANZPG	Convertible Preference Shares and Capital Notes	34,902,693	4.24%	340,617	5.11%
CBAPK	Convertible Preference Shares and Capital Notes	33,311,418	4.05%	332,903	4.99%
WBCPH	Convertible Preference Shares and Capital Notes	29,706,402	3.61%	290,034	4.35%
AN3PJ	Convertible Preference Shares and Capital Notes	28,656,862	3.48%	287,318	4.31%
Total Top 5		164,425,700.21	19.99%	1,617,640	24.27%

Yield versus conversion/reset/maturity date





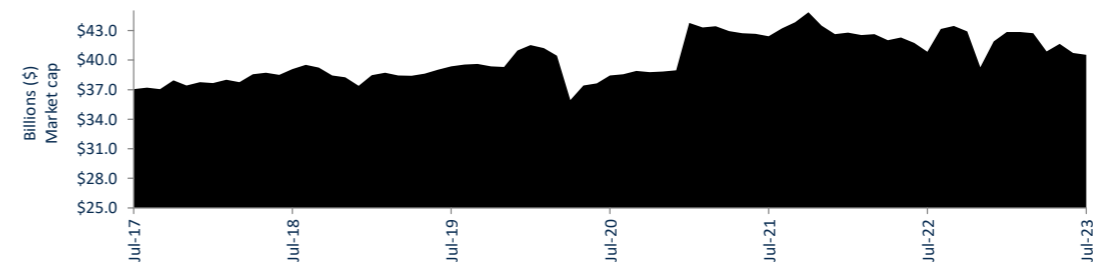
Hybrids:

Monthly Update - July 2023

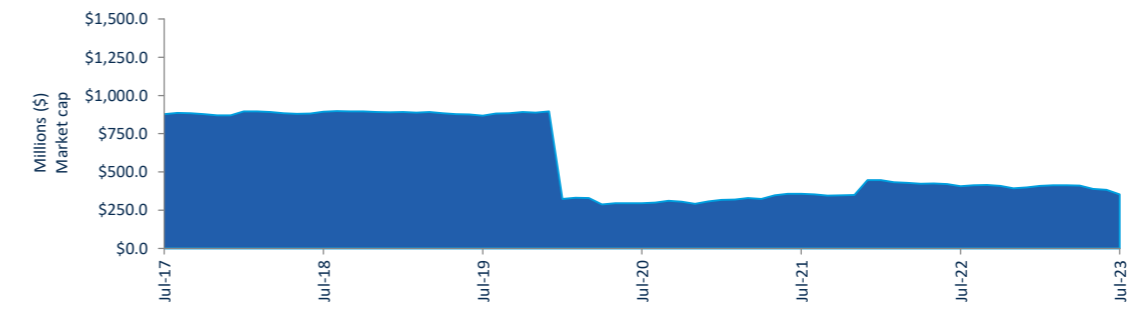


Performance and Trading Activity Breakdown by Category

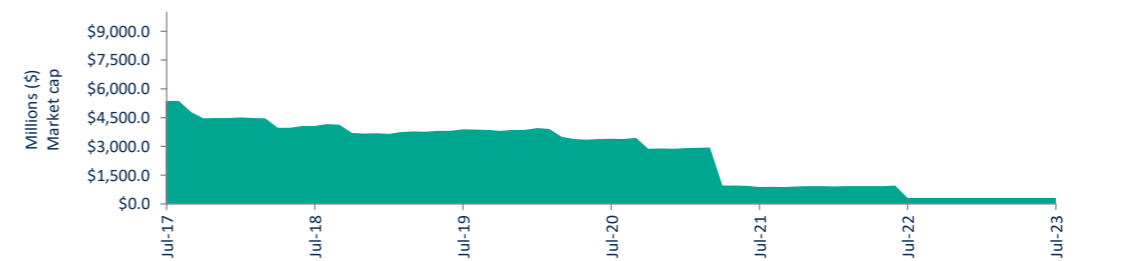
Convertible Preference Shares and Capital Notes	Last 12 months			Last month	
	Jul-22	Jul-23	% change	Jun-23	% change
Market Cap (\$m)	43,158.5	41,150.1	-4.7%	#####	-1.5%
Number listed (actual)	47	-	-100.0%	47	#DIV/0!
Monthly volume	7,499,731	6,316,941	-15.8%	#####	27.7%
Monthly trades	31,729	32,768	3.3%	41,909	27.9%
Monthly value (\$m)	746.6	621.6	-16.7%	815.6	31.2%



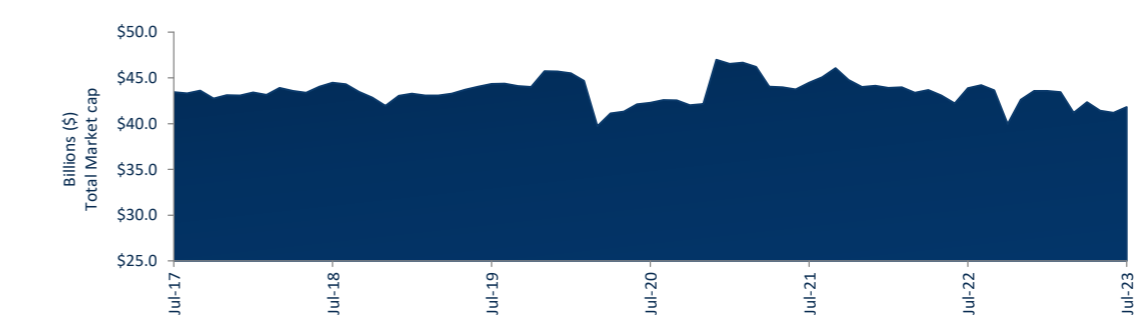
Convertible Bonds	Last 12 months			Last month	
	Jul-22	Jul-23	% change	Jun-23	% change
Market Cap (\$m)	412.7	356.6	-13.6%	352.8	-1.1%
Number listed (actual)	9	-	-100.0%	9	#DIV/0!
Monthly volume	820,767	322,320	-60.7%	801,481	148.7%
Monthly trades	322	276	-14.3%	328	18.8%
Month value (\$m)	3.6	2.3	-37.2%	3.0	34.5%



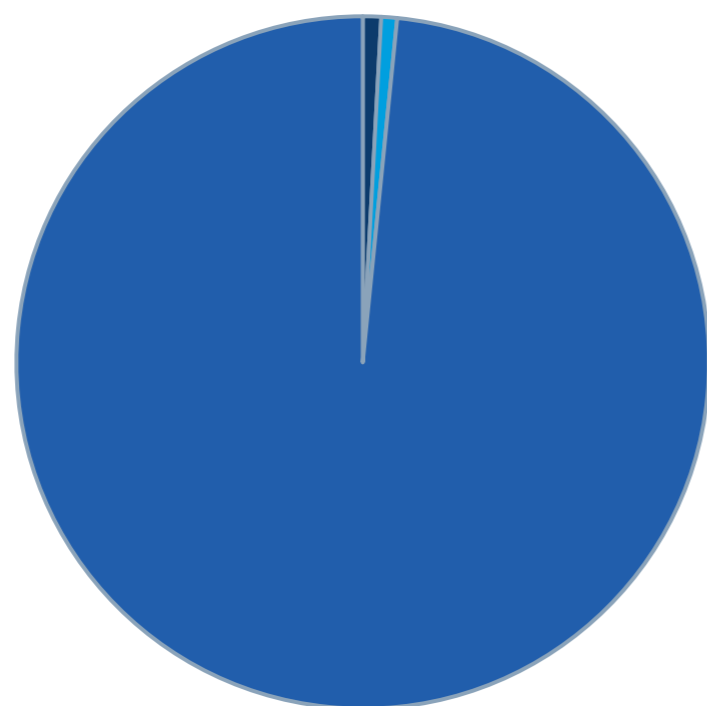
Hybrid Securities	Last 12 months			Last month	
	Jul-22	Jul-23	% change	Jun-23	% change
Market Cap (\$m)	312.1	307.6	-1.4%	306.8	-0.2%
Number listed (actual)	1	-	-100.0%	1	n/a
Monthly volume	29,198	26,840	-8.1%	39,468	47.0%
Monthly trades	205	200	-2.4%	384	92.0%
Monthly value (\$m)	3.0	2.7	-8.8%	4.0	48.2%



Total Hybrid Market	Last 12 months			Last month	
	Jul-22	Jul-23	% change	Jun-23	% change
Market Cap (\$m)	43,883.3	41,814.3	-4.7%	#####	-1.5%
Number listed (actual)	57	-	-100.0%	57	#DIV/0!
Monthly volume	8,349,696	6,666,101	-20.2%	#####	33.7%
Monthly trades	32,256	33,244	3.1%	42,621	28.2%
Monthly value (\$m)	753.2	626.6	-16.8%	822.7	31.3%

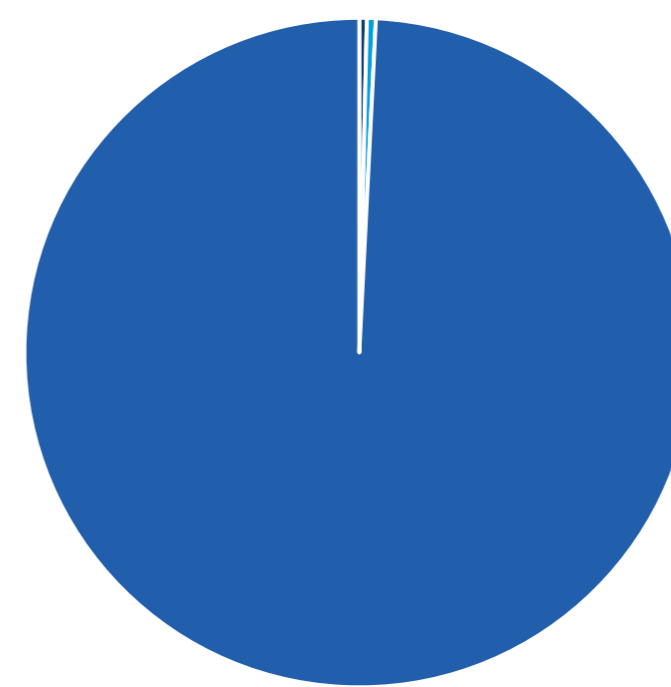


Hybrids Mkt Cap Breakdown by Type



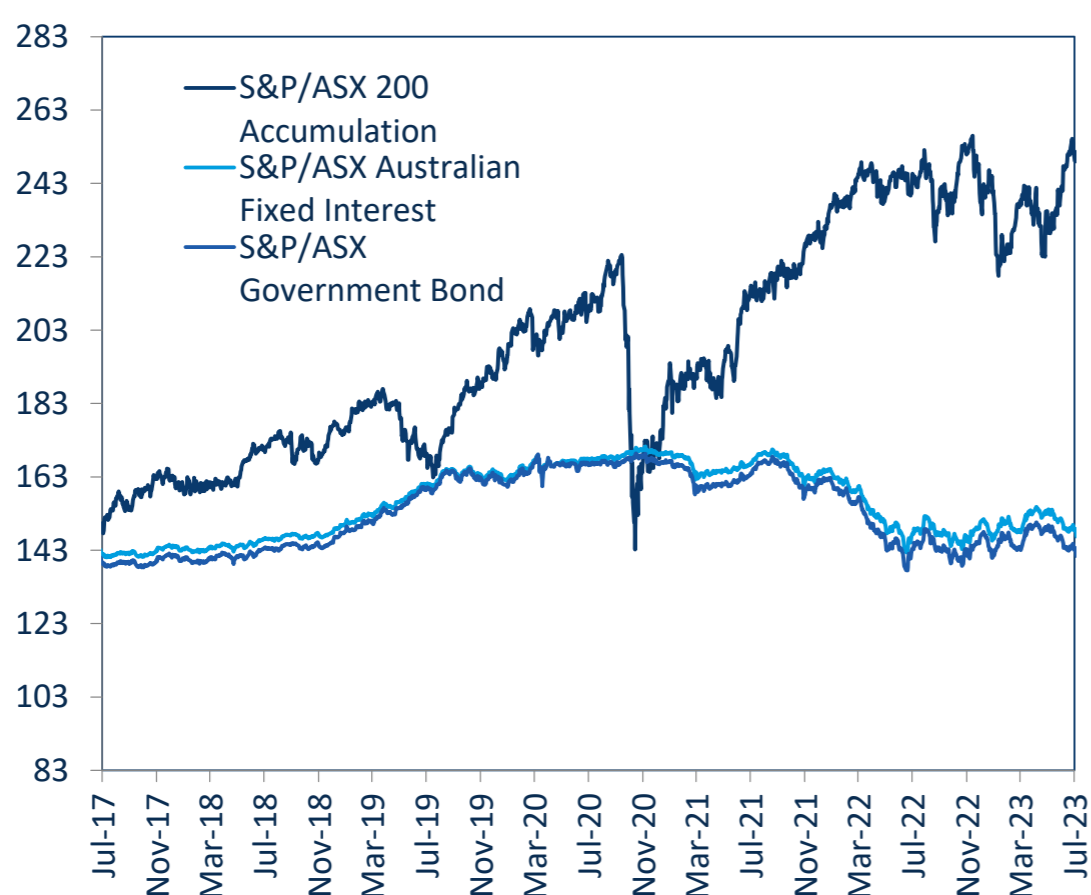
- Convertible Bonds, \$357 m
- Hybrid Securities, \$308 m
- Convertible Preference Shares and Capital Notes, \$41,150 m

Hybrids Breakdown by Traded Value

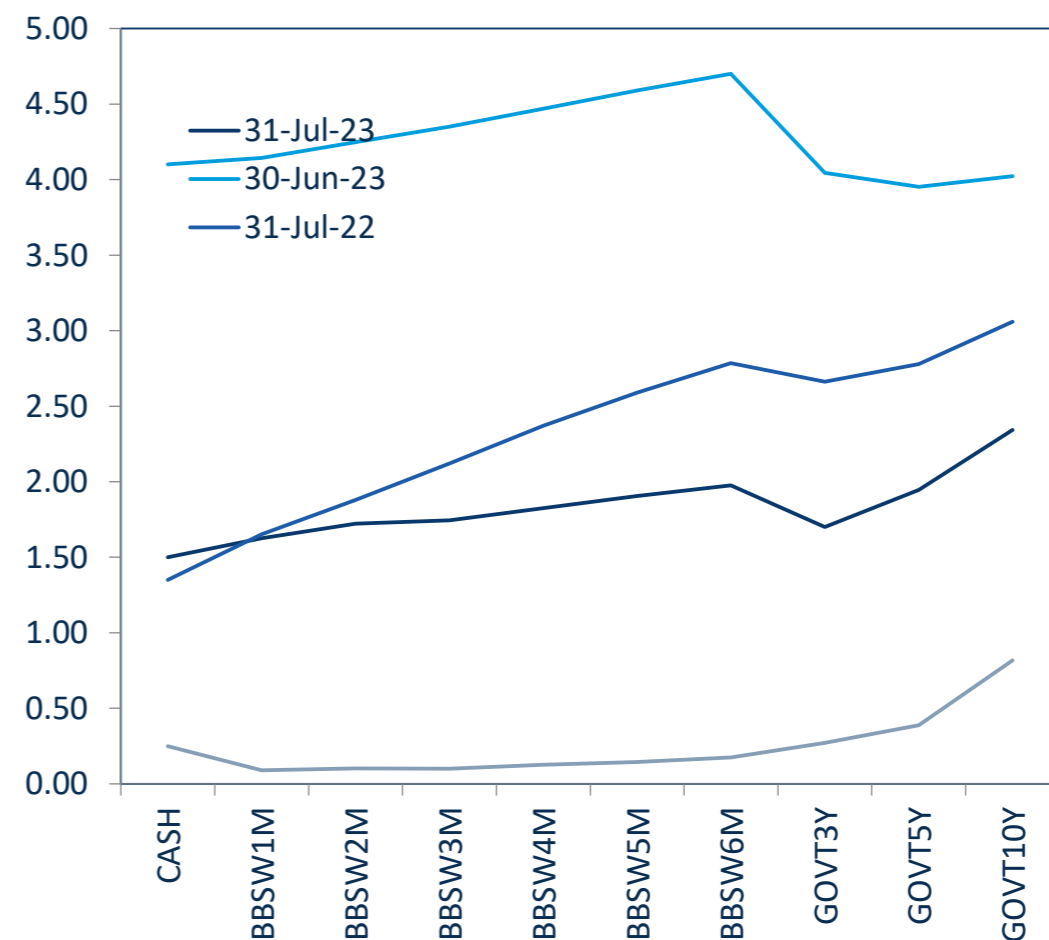


- Convertible Bonds, \$2,267 k
- Hybrid Securities, \$2,697 k
- Convertible Preference Shares and Capital Notes, \$621,645 k

S&P/ASX Indices (rebased to 100)



Australian Yield Curve





Spotlight on Hybrids:

Monthly update - July 2023



ASX Profiles

ASX Code	Issuer	Description
Convertible Bonds		
CAMG	Clime Capital Limited	Convert Bond 5.25% 30-11-25 Qly Red
CVCG	CVC Limited	Convert Bond 3-Bbsw+3.75% 22-6-23 Qly Non-Cum Red
ECPGA	ECP Emerging Growth Limited	Convert Bond 5.50% 11-04-27 Qly Sub Red T-4-24
FSIGA	Flagship Investments Limited	Convert Bond 5.50% 01-10-26 Qly Red Step T-09-24
GFLGA	Global Masters Fund Limited	Convert Bond 5.5% 24-11-26 Qly Sub Red T-11-23
MOZG	Mosaic Brands Limited	Convert Bond 8.0% 30-09-24 Qly Sub Sec T-09-22
NACGA	Naos Ex-50 Opportunities Company Limited	Convert Bond 5.50% 30-09-27 Semi Step T-09-25
NCCGA	Naos Emerging Opportunities Company Limited	Convert Bond 4.50% 30-09-28 Semi Non-Cum Red Step
NFNG	Nufarm Finance (NZ) Limited	Convert Bond 6-Bbsw+3.90% Perp Sub Non-Cum Exh Stp
Hybrid Securities		
QUBHA	Qube Holdings Limited	Hybrid 3-Bbsw+3.90% 05-10-23 Sub Cum
Converting Preference Shares and Capital Notes		
AMPPB	AMP Limited	Cap Note 3-Bbsw+4.50% Perp Non-Cum Red T-12-25
AN3PF	Australia and New Zealand Banking Group Limited	Cap Note 6-Bbsw+3.60% Perp Non-Cum Red T-03-23
ANZPG	Australia and New Zealand Banking Group Limited	Cap Note 3-Bbsw+4.70% Perp Non-Cum Red T-03-24
ANZPH	Australia and New Zealand Banking Group Limited	Cap Note 3-Bbsw+3.85% Perp Non-Cum Red T-03-25
ANZPI	Australia and New Zealand Banking Group Limited	Cap Note 3-Bbsw+3.00 Perp Non-Cum Red T-03-28
AN3PJ	Australia and New Zealand Banking Group Limited	Cap Note 3-Bbsw+2.70% Perp Non-Cum Red T-03-29
AYUPA	Australian Unity Limited	Mci Cap Note 5.00% Perp Semi Non-Cum
BENPG	Bendigo and Adelaide Bank Limited	Cnv Pref 3-Bbsw+3.75% Perp Non-Cum Red T-06-24
BENPH	Bendigo and Adelaide Bank Limited	Cap Note 3-Bbsw+3.80% Perp Non-Cum Red T-06-27
BOQPE	Bank of Queensland Limited	Cap Note 3-Bbsw+3.75% Perp Non-Cum Red T-08-24
BOQPF	Bank of Queensland Limited	Cap Note 3-Bbsw+3.80% Perp Non-Cum Red T-05-27
BOQPG	Bank of Queensland Limited	Cap Note 3-Bbsw+3.40% Perp Non-Cum Red T-12-28
CBAPG	Commonwealth Bank of Australia	Cap Note 3-Bbsw+3.40% Perp Non-Cum Red T-04-25
CBAPH	Commonwealth Bank of Australia	Cap Note 3-Bbsw+3.70% Perp Non-Cum Red T-04-24
CBAPI	Commonwealth Bank of Australia	Cap Note 3-Bbsw+3.00% Perp Non-Cum Red T-04-27
CBAPJ	Commonwealth Bank of Australia	Cap Note 3-Bbsw+2.75% Perp Non-Cum Red T-10-26
CBAPK	Commonwealth Bank of Australia	Cap Note 3-Bbsw+2.75% Perp Non-Cum Red T-06-29
CBAPL	Commonwealth Bank of Australia	Cap Note 3-Bbsw+2.85% Perp Non-Cum Red T-06-28
CGFPC	Challenger Limited	Cap Note 3-Bbsw+4.60% Perp Non-Cum Red T-05-26
CGFPD	Challenger Limited	Cap Note 3-Bbsw+3.60% Perp Non-Cum Red T-05-29
CINPA	Carlton Investments Limited	7% Cumulative Preference
DCGPA	Decmil Group Limited	Convert Pref 12.00% Semi Cum Step Red T-07-26
IAGPE	Insurance Australia Group Limited	Cap Note 3-Bbsw+3.50% Perp Non-Cum Red T-06-29
IAGPD	Insurance Australia Group Limited	Cap Note 3-Bbsw+4.70% Perp Non-Cum Red T-06-23
GC1PA	Glennon Small Companies Limited	Cnv Pref 5.60% 30-9-30 Semi Cum Exc Res T-3-21
LFSPA	Latitude Group Holdings Limited	Cap Note 3-Bbsw+4.75% Perp Non-Cum Red T-10-26
MBLPC	Macquarie Bank Limited	Cap Note 3-Bbsw+4.70% Perp Non-Cum Red T-12-25
MBLPD	Macquarie Bank Limited	Cap Note 3-Bbsw+2.90% Perp Non-Cum Red T-09-28
MQGPC	Macquarie Group Limited	Cap Note 3-Bbsw+4.00% Perp Non-Cum Red T-12-24
MQGPD	Macquarie Group Limited	Cap Note 3-Bbsw+4.15% Perp Non-Cum Red T-09-26
MQGPE	Macquarie Group Limited	Cap Note 3-Bbsw+2.90% Perp Non-Cum Red T-09-27
MQGPF	Macquarie Group Limited	Cap Note 3-Bbsw+3.70% Perp Non-Cum Red T-09-29
NABPE	National Australia Bank Limited	Cap Note 3-Bbsw+2.20% 20-09-28 Cum Red T-09-23
NABPF	National Australia Bank Limited	Cap Note 3-Bbsw+4.00% Perp Non-Cum Red T-06-26
NABPH	National Australia Bank Limited	Cap Note 3-Bbsw+3.50% Perp Non-Cum Red T-12-27
NABPI	National Australia Bank Limited	Cap Note 3-Bbsw+3.15% Perp Non-Cum Red T-12-29
RHCPA	Ramsay Health Care Limited	Trans Pref 6-Bbsw+4.85% Perp Sub Red T-10-10
SSLPA	Sietel Limited	5.0% Cumulative Preference
SUNPG	Suncorp Group Limited	Cap Note 3-Bbsw+3.65% Perp Non-Cum Red T-06-24
SUNPH	Suncorp Group Limited	Cap Note 3-Bbsw+3.00% Perp Non-Cum Red T-06-26
SUNPI	Suncorp Group Limited	Cap Note 3-Bbsw+2.90% Perp Non-Cum Red T-06-28
WBCPH	Westpac Banking Corporation	Cap Note 3-Bbsw+3.20% Perp Non-Cum Red T-09-25
WBCPI	Westpac Banking Corporation	Cap Note 3-Bbsw+3.70% Perp Non-Cum Red T-07-24
WBCPJ	Westpac Banking Corporation	Cap Note 3-Bbsw+3.40% Perp Non-Cum Red T-03-27
WBCPK	Westpac Banking Corporation	Cap Note 3-Bbsw+2.90% Perp Non-Cum Red T-09-29
WBCLP	Westpac Banking Corporation	Cap Note 3-Bbsw+3.40% Perp Non-Cum Red T-09-28
WHFPA	Whitefield Industrials Limited	8.0% Cumulative Preference
WHFPB	Whitefield Industrials Limited	Conv Pref 3.75% 30-11-24 Semi Sub Non-Cum Res Red

Detail

ASX Listed Date	Maturity / Conv / Reset	Coupon ²	Payment Frequency	Payment Rank	Issuer Type	Announced Ex Date	Announced Payment Date
08-Dec-17	30-Nov-25	5.25%	Qtrly	Sr Unsecured	Financial Services	01-Sep-23	11-Sep-23
25-Jun-18	22-Jun-23	7.47%	Qtrly	Sr Unsecured	Financial Services		
19-Apr-22	11-Apr-27	5.50%	Qtrly	Sr Unsecured	Financial Services		
04-Oct-21	30-Sep-24	5.50%	Qtrly	Sr Unsecured	Financial Services		
29-Nov-21	23-Nov-24	5.50%	Qtrly	Sr Unsecured	Funds & Trusts		
08-Oct-21	07-Jul-23	8.00%	Qtrly	2nd lien	Retail - Consumer Discretionary		
20-Nov-20	30-Sep-25	5.50%	S/A	Sr Unsecured	Financial Services		
20-Apr-21	30-Sep-28	4.50%	S/A	Sr Unsecured	Financial Services		
27-Nov-06	N/A	7.66%	S/A	Jr Subordinated	Chemicals	05-Oct-23	16-Oct-23
06-Oct-16	05-Oct-23	8.17%	Qtrly	Subordinated	Transportation & Logistics	26-Sep-23	05-Oct-23
24-Dec-19	16-Dec-25	8.80%	Qtrly	Jr Subordinated	Financial Services	07-Sep-23	18-Sep-23
21-Dec-22	24-Mar-23	n/a	S/A	Jr Subordinated	Banks		
21-Dec-22	20-Mar-24	9.02%	Qtrly	Jr Subordinated	Banks		
21-Dec-22	20-Mar-25	8.12%	Qtrly	Jr Subordinated	Banks		
21-Dec-22	20-Mar-28	7.32%	Qtrly	Jr Subordinated	Banks		
21-Dec-22	20-Mar-29	7.02%	Qtrly	Jr Subordinated	Banks	07-Sep-23	20-Sep-23
04-Jan-21	N/A	5.00%	S/A	Preferred	Managed Care		
14-Dec-17	13-Jun-24	7.97%	Qtrly	Jr Subordinated	Banks	31-Aug-23	13-Sep-23
01-Dec-20	15-Jun-27	8.04%	Qtrly	Jr Subordinated	Banks	06-Sep-23	15-Sep-23
29-Dec-17	15-Aug-24	7.92%	Qtrly	Jr Subordinated	Banks	30-Oct-23	15-Nov-23
01-Dec-20	14-May-27	7.97%	Qtrly	Jr Subordinated	Banks	30-Oct-23	15-Nov-23
15-Nov-22	15-May-27	7.64%	Qtrly	Jr Subordinated	Banks	30-Aug-23	15-Sep-23
09-Apr-18	15-Apr-25	7.64%	Qtrly	Jr Subordinated	Banks	06-Sep-23	15-Sep-23
18-Dec-18	26-Apr-24	7.94%	Qtrly	Jr Subordinated	Banks	06-Sep-23	15-Sep-23
15-Nov-19	20-Apr-27	7.24%	Qtrly	Jr Subordinated	Banks	06-Sep-23	15-Sep-23
06-Apr-21	20-Oct-26	6.99%	Qtrly	Jr Subordinated	Banks	06-Sep-23	15-Sep-23
01-Apr-22	15-Jun-29	6.99%	Qtrly	Jr Subordinated	Banks	06-Sep-23	15-Sep-23
16-Nov-22	16-Jun-29	7.09%	Qtrly	Jr Subordinated	Banks	06-Sep-23	15-Sep-23
26-Nov-20	25-May-26	8.53%	Qtrly	Jr Subordinated	Life Insurance	16-Aug-23	25-Aug-23
06-Apr-23	N/A	7.24%	Qtrly	Jr Subordinated	Life Insurance	16-Aug-23	25-Aug-23
15-Mar-86	N/A	7.00%	Annual	Preferred	Financial Services	31-Aug-23	18-Sep-23
25-Jul-23	21-Jul-26	n/a	n/a	n/a	n/a	30-Aug-23	30-Sep-23
23-Dec-22	29-Jun-29	7.74%	Qtrly	Jr Subordinated	Property & Casualty Insurance	31-Aug-23	15-Sep-23
23-Dec-16	15-Jun-23	n/a	Qtrly	Jr Subordinated	Property & Casualty Insurance		
07-Dec-20	30-Sep-30	5.60%	S/A	Subordinated	Financial Services	13-Sep-23	03-Oct-23
29-Sep-21	27-Oct-26	9.03%	Qtrly	Subordinated	Life Insurance	18-Oct-23	27-Oct-23
03-Jun-20	N/A	8.98%	Qtrly	Jr Subordinated	Banks	05-Sep-23	21-Sep-23
30-Aug-21	07-Sep-28	7.08%	Qtrly	Subordinated	Banks	22-Aug-23	07-Sep-23
08-Jun-18	16-Dec-24	8.24%	Qtrly	Jr Subordinated	Diversified Banks	06-Sep-23	15-Sep-23
28-Mar-19	10-Sep-26	8.37%	Qtrly	Jr Subordinated	Diversified Banks	31-Aug-23	11-Sep-23
18-Mar-21	18-Sep-27	7.22%	Qtrly	Jr Subordinated	Diversified Banks	31-Aug-23	18-Sep-23
18-Jul-22	12-Sep-29	7.92%	Qtrly	Jr Subordinated	Diversified Banks	25-Aug-23	12-Sep-23
21-Mar-17	20-Sep-23	6.52%	Qtrly	Subordinated	Banks	11-Sep-23	20-Sep-23
21-Mar-19	17-Jun-26	8.32%	Qtrly	Jr Subordinated	Banks	05-Sep-23	18-Sep-23
18-Dec-20	17-Dec-27	7.82%	Qtrly	Jr Subordinated	Banks	05-Sep-23	18-Sep-23
08-Jul-22	17-Dec-29	7.47%	Qtrly	Jr Subordinated	Banks	05-Sep-23	18-Sep-23
24-May-05	N/A	8.54%	S/A	Preferred	Health Care Facilities & Services	28-Sep-23	20-Oct-23
15-Mar-86	N/A	5.00%	Annual	Preferred	Financial Services		
27-Nov-17	17-Jun-24	7.97%	Qtrly	Jr Subordinated	Property & Casualty Insurance	01-Sep-23	18-Sep-23
18-Dec-19	17-Jun-26	7.32%	Qtrly	Jr Subordinated	Property & Casualty Insurance	01-Sep-23	18-Sep-23
24-Sep-21	17-Jun-28	7.22%	Qtrly	Jr Subordinated	Property & Casualty Insurance	01-Sep-23	18-Sep-23
14-Mar-18	22-Sep-25	7.48%	Qtrly	Jr Subordinated	Banks	13-Sep-23	22-Sep-23
19-Dec-18	31-Jul-24	8.02%	Qtrly	Jr Subordinated	Banks	07-Sep-23	18-Sep-23
07-Dec-20	22-Mar-27	7.68%	Qtrly	Jr Subordinated	Banks	13-Sep-23	22-Sep-23
16-Sep-21	21-Sep-29	7.18%	Qtrly	Jr Subordinated	Banks	12-Sep-23	21-Sep-23
21-Jul-22	22-Sep-28	7.68%	Qtrly	Jr Subordinated	Banks	13-Sep-23	22-Sep-23
15-Mar-86	N/A	0.00%	S/A	Preferred	Financial Services		
14-Aug-12	30-Nov-22	0.00%	n/a	Preferred	Financial Services		

¹ The yield data for the bonds have been sourced from Bloomberg using the Mid Yield to Convention function as at 31 July 2023

² The coupon data has been sourced from Bloomberg using the Coupon function as at 31 July 2023

³ Monthly liquidity is equal to the total value traded for the security for the month divided by its market capitalisation

All values are as at Jul-23.

Past Performance is not a reliable indicator of future performance.

Information provided does not constitute financial product advice. You should obtain independent advice from an Australian financial services licensee before making any financial decisions. Although ASX Limited ABN 98 008 624 691 and its related bodies corporate ("ASX") has made every effort to ensure the accuracy of the information as at the date of publication, ASX does not give any warranty or representation as to the accuracy, reliability or completeness of the information. To the extent permitted by law, ASX and its employees, officers and contractors shall not be liable for any loss or damage arising in any way (including by way of negligence) from or in connection with any information provided or omitted or from any one acting or refraining to act in reliance on this information.

© Copyright 2023 ASX Operations Pty Limited ABN 42 004 523 782. All rights reserved 2023

Activity

Mkt Cap (\$m)	Traded Value (\$)	Traded Volume	Number of Trades	Monthly Liquidity % ³
\$ 34.56	\$ 73,268.77	75,343	12	0.21%
\$ -	\$ 37,626.40	373	5	#DIV/0!
\$ 9.84	\$ 146,731.69	112,655	10	1.49%
\$ 18.96	\$ 90,005.80	35,365	7	0.47%
\$ 9.35	\$ -	-	-	0.00%
\$ 12.37	\$ 69,691.49	78,347	11	0.56%
\$ 16.75	\$ 23,187.40	246	8	0.14%
\$ 20.36	\$ 173,699.08	1,988	15	0.85%
\$ 234.43	\$ 1,652,789.06	18,003	208	0.71%
\$ 307.56	\$ 2,696,741.42	26,840	200	0.88%
\$ 286.83	\$ 2,955,168.94	28,463	156	1.03%
\$ -	\$ 5,897,246.39	57,808	171	#DIV/0!
\$ 1,676.82	\$ 34,902,692.70	340,617	1,423	2.08%
\$ 976.24	\$ 15,869,948.50	153,026	838	1.63%
\$ 1,548.75	\$ 20,736,790.18	203,967	1,351	1.34%
\$ 1,317.58	\$ 28,656,861.96	287,318	1,499	2.17%
\$ 287.94	\$ 2,263,065.91	26,913	169	0.79%
\$ 334.48	\$ 3,036,781.80	29,720	330	0.91%
\$ 526.26	\$ 5,964,924.61	57,838	477	1.13%
\$ 357.60	\$ 6,581,273.71	64,253	433	1.84%
\$ 267.54	\$ 5,386,926.19	52,229	247	2.01%
\$ 409.20	\$ 5,982,193.17	58,879	401	1.46%
\$ 1,423.01	\$ 14,341,771.43	138,971	922	1.01%
\$ 1,628.32	\$ 22,086,428.13	216,327	1,094	1.36%
\$ 1,691.42	\$ 27,223,233.60	267,826	1,184	1.61%
\$ 1,200.77	\$ 23,937,172.41	236,761	1,076	1.99%
\$ 1,766.63	\$ 33,311,418.05	332,903	1,267	1.89%
\$ 1,810.26	\$ 21,539,398.22	213,765	1,276	1.19%
\$ 404.52	\$ 6,037,889.03	57,796	289	1.49%
\$ 360.85	\$ 10,141,845.22	99,738	635	2.81%
\$ 0.18	\$ -	-	-	0.00%
\$ 26.28	\$ 44,268.01	225,118	5	0.17%
\$ 517.60	\$ 16,235,098.25	160,075	822	3.14%
\$ -	\$ 721,502.33	7,069	39	#DIV/0!
\$ 5.67	\$ -	-	-	0.00%
\$ 130.95	\$ 983,097.02	11,343	143	0.75%
\$ 684.30	\$ 8,593,764.88	81,130	712	1.26%
\$ 668.93	\$ 12,709,133.95	125,775	579	1.90%
\$ 1,043.90	\$ 12,510,035.33	120,599	1,058	1.20%
\$ 962.08	\$ 9,389,440.99	88,903	722	0.98%
\$ 741.40	\$ 13,672,769.69	134,780	668	1.84%
\$ 781.88	\$ 10,619,322.57	101,970	611	1.36%
\$ 950.76	\$ 13,619,777.94	135,495	712	1.43%