



Hybrids:

Monthly Update - June 2024



Month: Jun-24

Trading days: 19

Period ending: Friday, 28 June 2024

Snapshot by Category

Australian Segment Bond Segment	Number listed	Market Cap (\$m)	Trades Total (#)	Trades per day (#)	Volume (#)	Value \$m
Convertible Preference Shares and Capital Notes	51	45,573	46,853	2,466	8,973,832	706.8
Convertible Bonds	8	351	480	25	728,221	3.3
Hybrid Securities	0	0	0	0	0	0.0
Total	59	45,924	47,333	2,491	9,702,053	710.1

Recent Listings

Entity	ASX Code	Size (\$m)	Type	Listing Date	Issue Price	Maturity / Conv / Reset	Interest Rate / Dividend	Distribution Frequency	Last Price
National Australia Bank Limited	NABPK	1,000.0	Convertible Preference Share	07-Jun-2024	\$100.00	17-Mar-2032	7.06%	Qtrly	\$100.62
Suncorp Group Limited	SUNPJ	360.0	Convertible Preference Share	15-May-2024	\$100.00	17-Jun-2030	7.17%	Qtrly	\$101.75
Insurance Australia Group Limited	IAGPF	350.0	Convertible Preference Share	27-Mar-2024	\$100.00	15-Dec-2030	7.66%	Qtrly	\$101.28
Bendigo and Adelaide Bank Limited	BENPI	300.0	Convertible Preference Share	26-Mar-2024	\$100.00	13-Dec-2030	7.66%	Qtrly	\$103.60
Australia and New Zealand Banking Grc	AN3PL	1,700.0	Convertible Preference Share	21-Mar-2024	\$100.00	20-Mar-2031	7.25%	Qtrly	\$102.00
Westpac Banking Corporation	WBPCM	1,750.0	Convertible Preference Share	19-Dec-2023	\$100.00	22-Sep-2031	7.49%	Qtrly	\$102.90
Judo Capital Holdings Limited	JDOPA	75.0	Convertible Preference Share	17-Nov-2023	\$100.00	16-Feb-2029	10.85%	Qtrly	\$109.49
National Australia Bank Limited	NABPJ	1,250.0	Convertible Preference Share	15-Sep-2023	\$100.00	17-Sep-2030	7.17%	Qtrly	\$102.30
Decmil Group Limited	DCGPA	26.3	Convertible Preference Share	25-Jul-2023	\$0.20	21-Jul-2026	12.00%	S/A	\$0.34
Commonwealth Bank of Australia	CBAPM	1,550.0	Convertible Preference Share	13-Jun-2023	\$100.00	17-Jun-2030	7.37%	Qtrly	\$104.87
Challenger Limited	CGFPD	350.0	Convertible Preference Share	06-Apr-2023	\$100.00	25-May-2029	7.94%	Qtrly	\$103.16
Australia and New Zealand Banking Grc	AN3PK	1,500.0	Convertible Preference Share	27-Mar-2023	\$100.00	20-Mar-2030	7.13%	Qtrly	\$101.19
Insurance Australia Group Limited	IAGPE	495.0	Convertible Preference Share	23-Dec-2022	\$99.00	15-Jun-2029	7.87%	Qtrly	\$103.45
Commonwealth Bank of Australia	CBAPL	1,777.4	Convertible Preference Share	16-Nov-2022	\$100.00	15-Jun-2028	7.22%	Qtrly	\$102.18

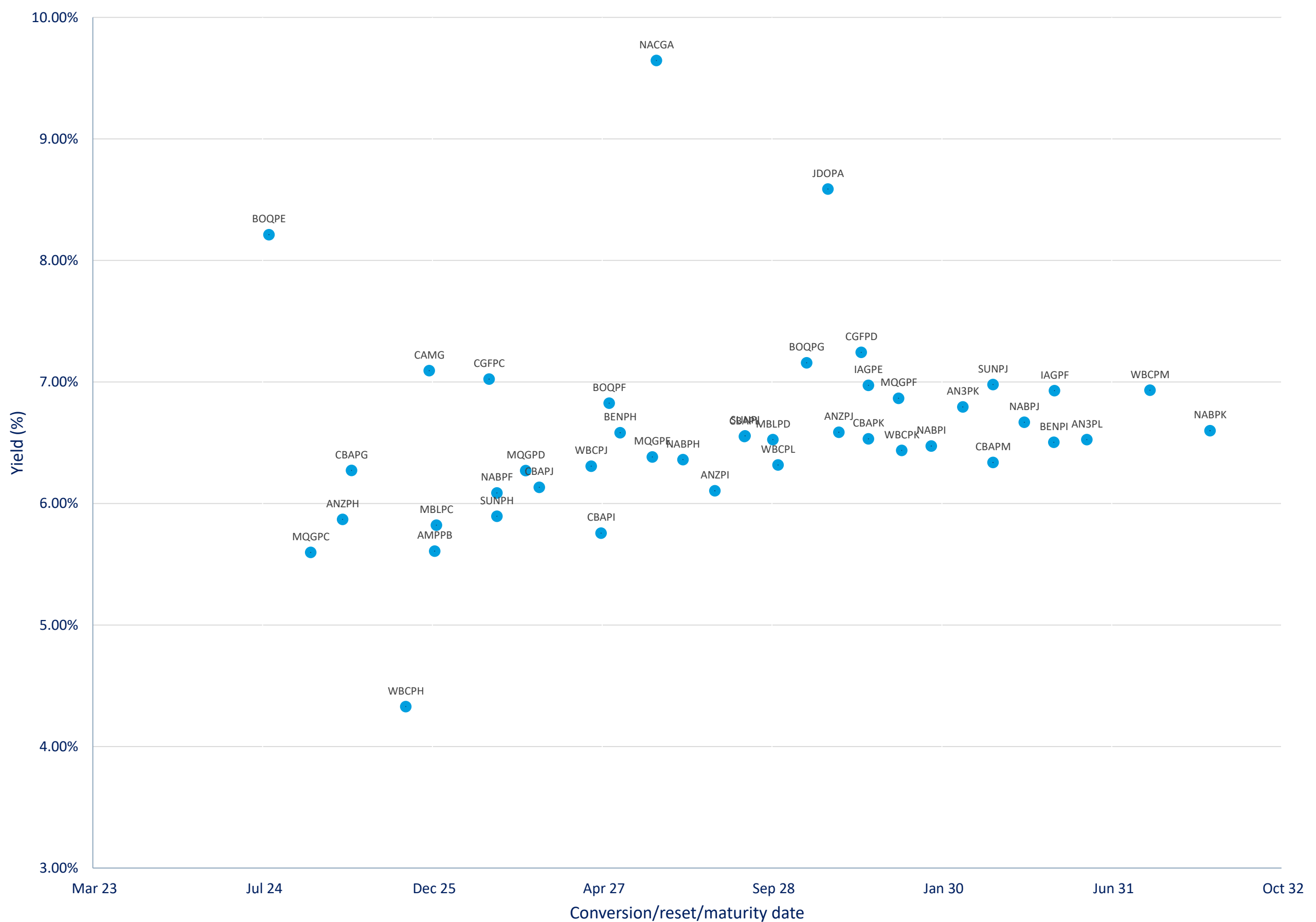
*BBSW = Bank Bill Swap Rate

† As of the date of this report this security has not traded, the Last Price reflects the Issue Price

Most Actively Traded Securities by Value

ASX Code	Security Type	Value (\$)	%Value	Volume	%Volume
NABPK	Convertible Preference Shares and Capital Notes	44,035,027	6.20%	439,507	4.53%
AN3PL	Convertible Preference Shares and Capital Notes	39,310,778	5.54%	387,532	3.99%
AN3PK	Convertible Preference Shares and Capital Notes	34,262,804	4.82%	339,651	3.50%
NABPH	Convertible Preference Shares and Capital Notes	30,067,597	4.23%	289,247	2.98%
NABPJ	Convertible Preference Shares and Capital Notes	29,777,277	4.19%	294,414	3.03%
Total Top 5		177,453,482.55	24.99%	1,750,351	18.04%

Yield versus conversion/reset/maturity date





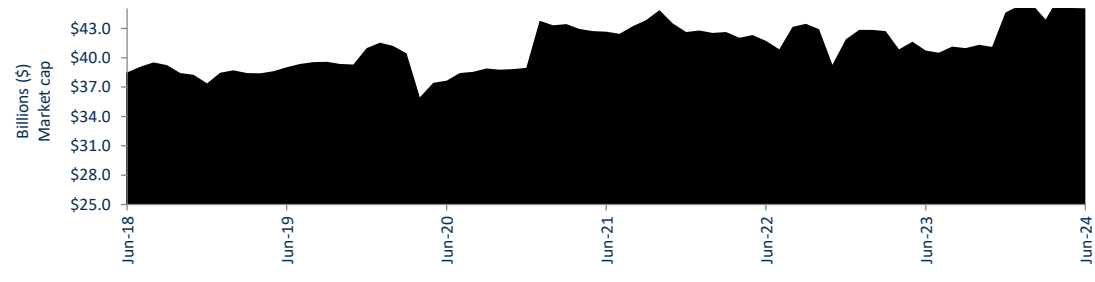
Hybrids:

Monthly Update - June 2024

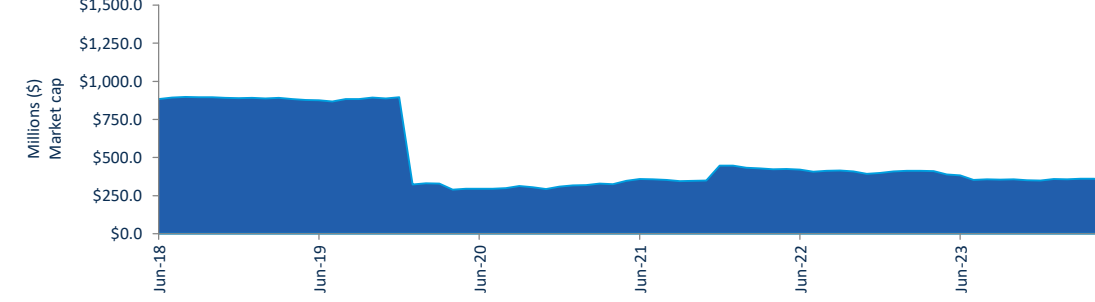


Performance and Trading Activity Breakdown by Category

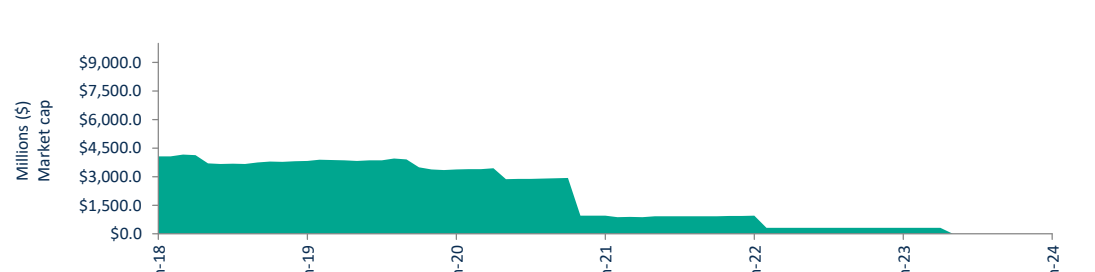
Convertible Preference Shares and Capital Notes	Last 12 months			Last month	
	Jun-23	Jun-24	% change	May-24	% change
Market Cap (\$m)	40,533.5	45,573.1	12.4%	45,053.2	1.2%
Number listed (actual)	47	51	8.5%	52	-1.9%
Monthly volume	8,068,640	8,973,832	11.2%	24,191,532	-62.9%
Monthly trades	41,909	46,853	11.8%	49,677	-5.7%
Monthly value (\$m)	815.6	706.8	-13.3%	827.5	-14.6%



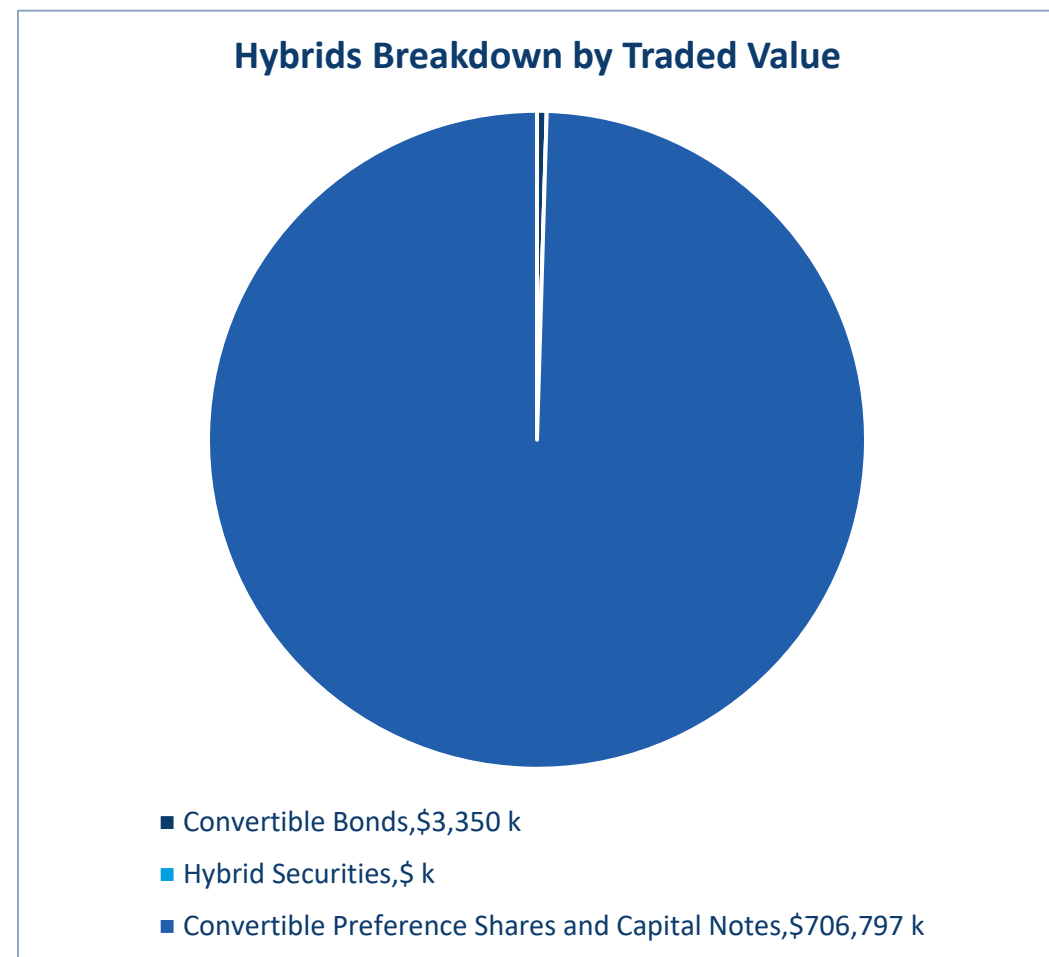
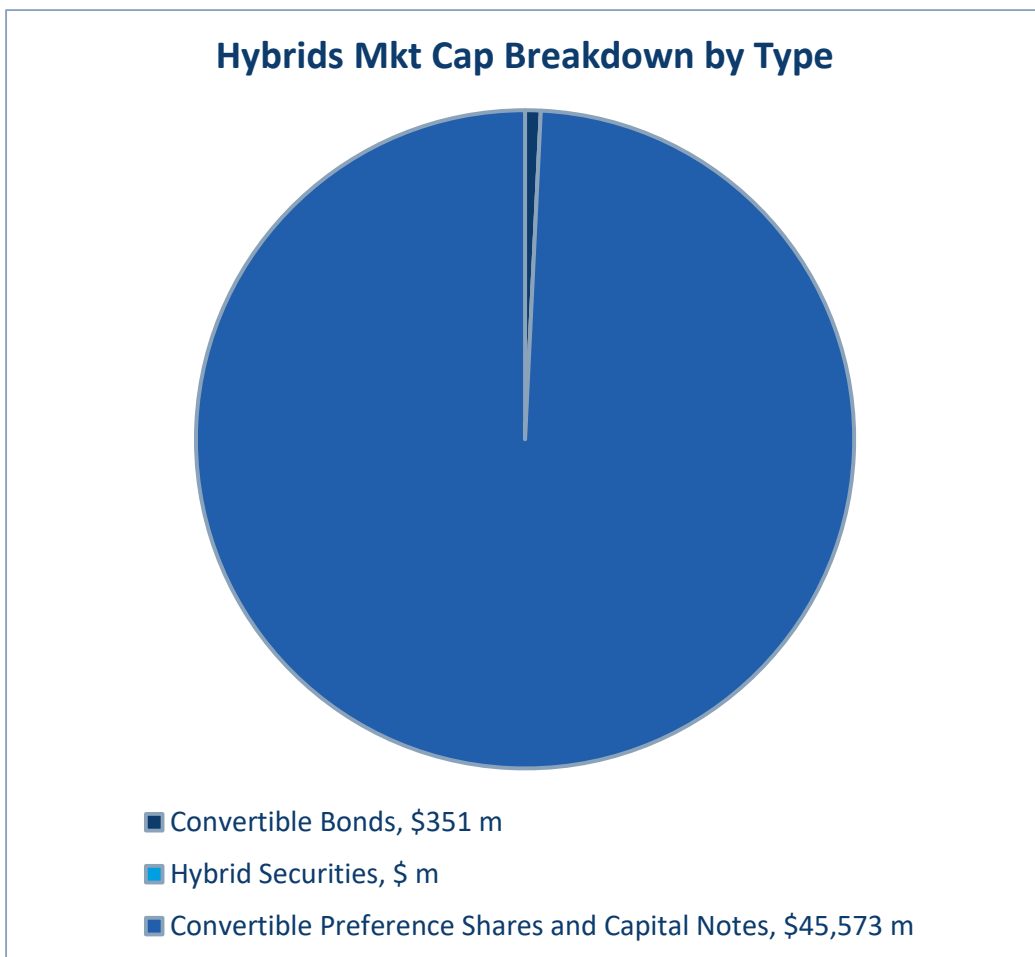
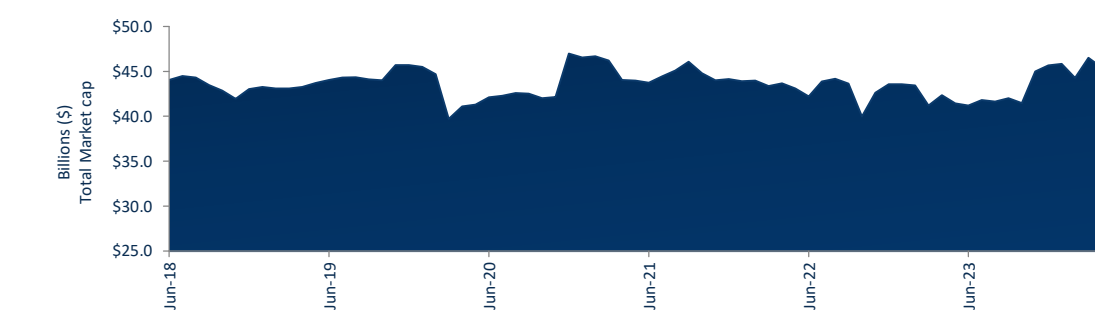
Convertible Bonds	Last 12 months			Last month	
	Jun-23	Jun-24	% change	May-24	% change
Market Cap (\$m)	352.8	351.0	-0.5%	350.0	0.3%
Number listed (actual)	9	8	-11.1%	8	0.0%
Monthly volume	801,481	728,221	-9.1%	601,258	21.1%
Monthly trades	328	480	46.3%	517	-7.2%
Month value (\$m)	3.0	3.3	9.9%	3.1	7.1%



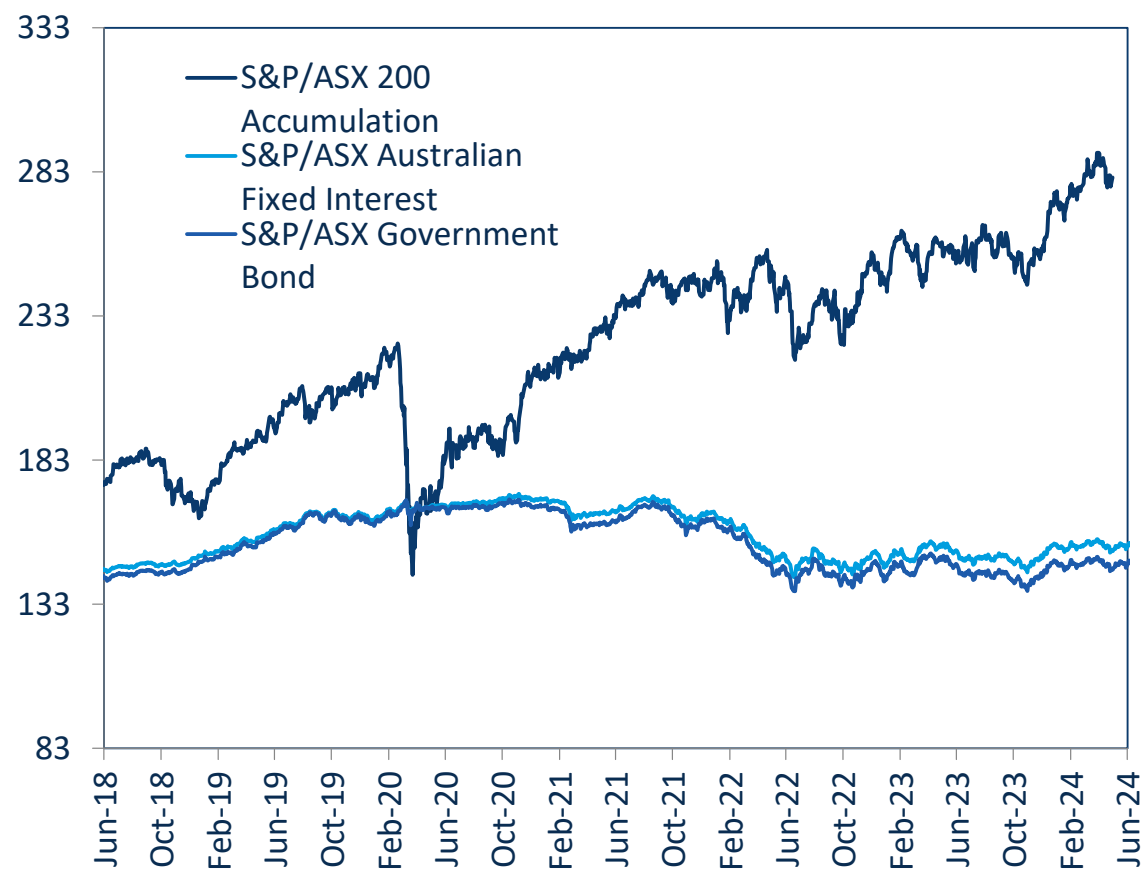
Hybrid Securities	Last 12 months			Last month	
	Jun-23	Jun-24	% change	May-24	% change
Market Cap (\$m)	306.8	-	-100.0%	-	n/a
Number listed (actual)	1	-	-100.0%	-	n/a
Monthly volume	39,468	-	-100.0%	-	n/a
Monthly trades	384	-	-100.0%	-	n/a
Monthly value (\$m)	4.0	-	-100.0%	-	n/a



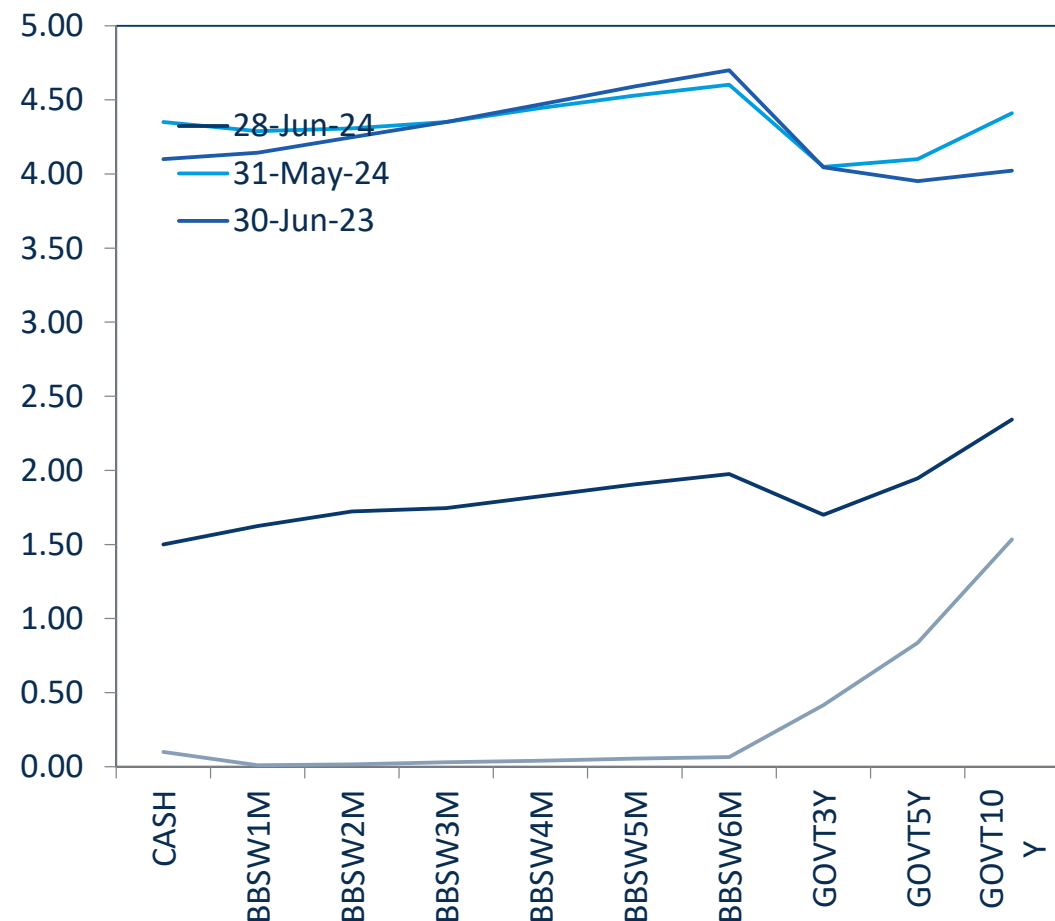
Total Market Cap	Last 12 months			Last month	
	Jun-23	Jun-24	% change	May-24	% change
Market Cap (\$m)	41,193.1	45,924.1	11.5%	45,403.1	1.1%
Number listed (actual)	57	59	3.5%	60	-1.7%
Monthly volume	8,909,589	9,702,053	8.9%	24,792,790	-60.9%
Monthly trades	42,621	47,333	11.1%	50,194	-5.7%
Monthly value (\$m)	822.7	710.1	-13.7%	830.6	-14.5%



S&P/ASX Indices (rebased to 100)



Australian Yield Curve





Spotlight on Hybrids:

Monthly update - June 2024



ASX Profiles

ASX Code	Issuer	Description
Convertible Bonds		
CAMG	Clime Capital Limited	Convert Bond 5.25% 30-11-25 Qly Red
ECPGA	ECP Emerging Growth Limited	Convert Bond 5.50% 11-04-27 Qly Sub Red T-4-24
FSIGA	Flagship Investments Limited	Convert Bond 5.50% 01-10-26 Qly Red Step T-09-24
GFLGA	Global Masters Fund Limited	Convert Bond 5.5% 24-11-26 Qly Sub Red T-11-23
MOZG	Mosaic Brands Limited	Convert Bond 8.0% 30-09-24 Qly Sub Sec T-09-22
NACGA	Naos Ex-50 Opportunities Company Limited	Convert Bond 5.50% 30-09-27 Semi Step T-09-25
NCCGA	Naos Emerging Opportunities Company Limited	Convert Bond 4.50% 30-09-28 Semi Non-Cum Red Step
NFNG	Nufarm Finance (NZ) Limited	Convert Bond 6-Bbsw+3.90% Perp Sub Non-Cum Exh Stp
Hybrid Securities		
Converting Preference Shares and Capital Notes		
AMPBB	AMP Limited	Cap Note 3-Bbsw+4.50% Perp Non-Cum Red T-12-25
ANZPH	Australia and New Zealand Banking Group Limited	Cap Note 3-Bbsw+3.80% Perp Non-Cum Red T-03-25
ANZPI	Australia and New Zealand Banking Group Limited	Cap Note 3-Bbsw+3.00 Perp Non-Cum Red T-03-28
AN3PJ	Australia and New Zealand Banking Group Limited	Cap Note 3-Bbsw+2.70% Perp Non-Cum Red T-03-29
AN3PK	Australia and New Zealand Banking Group Limited	Cap Note 3-Bbsw+2.75% Perp Non-Cum Red T-03-30
AN3PL	Australia and New Zealand Banking Group Limited	Cap Note 3-Bbsw+2.90% Perp Non-Cum Red T-03-31
AYUPA	Australian Unity Limited	Mci Cap Note 5.00% Perp Semi Non-Cum
BENPH	Bendigo and Adelaide Bank Limited	Cap Note 3-Bbsw+3.80% Perp Non-Cum Red T-06-27
BENPI	Bendigo and Adelaide Bank Limited	Cap Note 3-Bbsw+3.20% Perp Non-Cum Red T-12-30
BOQPE	Bank of Queensland Limited	Cap Note 3-Bbsw+3.75% Perp Non-Cum Red T-08-24
BOQPF	Bank of Queensland Limited	Cap Note 3-Bbsw+3.80% Perp Non-Cum Red T-05-27
BOQPG	Bank of Queensland Limited	Cap Note 3-Bbsw+3.40% Perp Non-Cum Red T-12-28
CBAPG	Commonwealth Bank of Australia	Cap Note 3-Bbsw+3.40% Perp Non-Cum Red T-04-25
CBAPI	Commonwealth Bank of Australia	Cap Note 3-Bbsw+3.00% Perp Non-Cum Red T-04-27
CBAPJ	Commonwealth Bank of Australia	Cap Note 3-Bbsw+2.75% Perp Non-Cum Red T-10-26
CBAPK	Commonwealth Bank of Australia	Cap Note 3-Bbsw+2.75% Perp Non-Cum Red T-06-29
CBAPL	Commonwealth Bank of Australia	Cap Note 3-Bbsw+2.85% Perp Non-Cum Red T-06-28
CBAPM	Commonwealth Bank of Australia	Cap Note 3-Bbsw+3.00% Perp Non-Cum Red T-06-30
CGFPC	Challenger Limited	Cap Note 3-Bbsw+4.60% Perp Non-Cum Red T-05-26
CGFPD	Challenger Limited	Cap Note 3-Bbsw+3.60% Perp Non-Cum Red T-05-29
CINPA	Carlton Investments Limited	7% Cumulative Preference
DGCPA	Decmil Group Limited	Convert Pref 12.00% Semi Cum Step Red T-07-26
GC1PA	Glennon Small Companies Limited	Cnv Pref 5.60% 30-9-30 Semi Cum Exc Red Res T-3-21
IAGPE	Insurance Australia Group Limited	Cap Note 3-Bbsw+3.50% Perp Non-Cum Red T-06-29
IAGPF	Insurance Australia Group Limited	Cap Note 3-Bbsw+3.20% Perp Non-Cum Red T-12-30
JDOPA	Judo Capital Holdings Limited	Cap Note 3-Bbsw+6.50% Perp Non-Cum Red T-02-29
LFSPA	Latitude Group Holdings Limited	Cap Note 3-Bbsw+4.75% Perp Non-Cum Red T-10-26
MBLPC	Macquarie Bank Limited	Cap Note 3-Bbsw+4.70% Perp Non-Cum Red T-12-25
MBLPD	Macquarie Bank Limited	Cap Note 3-Bbsw+2.90% Perp Non-Cum Red T-09-28
MQGPH	Macquarie Group Limited	Cap Note 3-Bbsw+4.00% Perp Non-Cum Red T-12-24
MQGPD	Macquarie Group Limited	Cap Note 3-Bbsw+4.15% Perp Non-Cum Red T-09-26
MQGPE	Macquarie Group Limited	Cap Note 3-Bbsw+2.90% Perp Non-Cum Red T-09-27
MQGPF	Macquarie Group Limited	Cap Note 3-Bbsw+3.70% Perp Non-Cum Red T-09-29
NABPF	National Australia Bank Limited	Cap Note 3-Bbsw+4.00% Perp Non-Cum Red T-06-26
NABPH	National Australia Bank Limited	Cap Note 3-Bbsw+3.50% Perp Non-Cum Red T-12-27
NABPI	National Australia Bank Limited	Cap Note 3-Bbsw+3.15% Perp Non-Cum Red T-12-29
NABPJ	National Australia Bank Limited	Cap Note 3-Bbsw+2.80% Perp Non-Cum Red T-09-30
NABPK	National Australia Bank Limited	Cap Note 3-Bbsw+2.60% Perp Non-Cum Red T-03-32
RHCPA	Ramsay Health Care Limited	Trans Pref 6-bbsw+ 4.85% Perp Sub Red T-10-10
SSLPA	Sietel Limited	5.0% Cumulative Preference
SUNPH	Suncorp Group Limited	Cap Note 3-Bbsw+3.00% Perp Non-Cum Red T-06-26
SUNPI	Suncorp Group Limited	Cap Note 3-Bbsw+2.90% Perp Non-Cum Red T-06-28
SUNPJ	Suncorp Group Limited	Cap Note 3-Bbsw+2.80% Perp Non-Cum Red T-06-30
WBPCPH	Westpac Banking Corporation	Cap Note 3-Bbsw+3.20% Perp Non-Cum Red T-09-25
WBPCPI	Westpac Banking Corporation	Cap Note 3-Bbsw+3.70% Perp Non-Cum Red T-07-24
WBPCPJ	Westpac Banking Corporation	Cap Note 3-Bbsw+3.40% Perp Non-Cum Red T-03-27
WBPCPK	Westpac Banking Corporation	Cap Note 3-Bbsw+2.90% Perp Non-Cum Red T-09-29
WBPCPL	Westpac Banking Corporation	Cap Note 3-Bbsw+3.40% Perp Non-Cum Red T-09-28
WBPCPM	Westpac Banking Corporation	Cap Note 3-Bbsw+3.10% Perp Non-Cum Red T-09-31
WHFPA	Whitefield Industrials Limited	8.0% Cumulative Preference
WHFPB	Whitefield Industrials Limited	Conv Pref 3.75% 30-11-24 Semi Sub Non-Cum Res Red

Detail

ASX Listed Date	Maturity / Conv / Reset	Coupon ²	Payment Frequency	Payment Rank	Issuer Type	Announced Ex Date	Announced Payment Date
08-Dec-17	30-Nov-25	5.25%	Qtrly	Sr Unsecured	Financial Services		
19-Apr-22	30-Jun-25	5.50%	Qtrly	Sr Unsecured	Financial Services		
04-Oct-21	01-Oct-26	5.50%	Qtrly	Sr Unsecured	Financial Services		
29-Nov-21	23-Nov-24	5.50%	Qtrly	Sr Unsecured	Funds & Trusts		
08-Oct-21	30-Sep-24	8.00%	Qtrly	2nd lien	Retail - Consumer Discretionary		
20-Nov-20	30-Sep-27	5.50%	S/A	Sr Unsecured	Financial Services		
20-Apr-21	30-Sep-28	4.50%	S/A	Sr Unsecured	Financial Services		
27-Nov-06	N/A	8.46%	S/A	Jr Subordinated	Chemicals	04-Oct-24	15-Oct-24
24-Dec-19	16-Dec-25	8.87%	Qtrly	Jr Subordinated	Financial Services	05-Sep-24	16-Sep-24
21-Dec-22	20-Mar-25	8.18%	Qtrly	Jr Subordinated	Banks		
21-Dec-22	20-Mar-28	7.38%	Qtrly	Jr Subordinated	Banks		
21-Dec-22	20-Mar-29	7.08%	Qtrly	Jr Subordinated	Banks	05-Sep-24	20-Sep-24
27-Mar-23	20-Mar-30	7.13%	Qtrly	Jr Subordinated	Banks		
21-Mar-24	20-Mar-31	7.25%	Qtrly	Jr Subordinated	Banks	05-Sep-24	20-Sep-24
04-Jan-21	N/A	5.00%	S/A	Preferred	Managed Care		
01-Dec-20	15-Jun-27	8.17%	Qtrly	Jr Subordinated	Banks	05-Sep-24	16-Sep-24
26-Mar-24	13-Dec-30	7.66%	Qtrly	Jr Subordinated	Banks	04-Sep-24	13-Sep-24
29-Dec-17	15-Aug-24	8.12%	Qtrly	Jr Subordinated	Banks	26-Jul-24	15-Aug-24
01-Dec-20	14-May-27	8.17%	Qtrly	Jr Subordinated	Banks	26-Jul-24	15-Aug-24
15-Nov-22	15-Dec-28	7.77%	Qtrly	Jr Subordinated	Banks	29-Aug-24	16-Sep-24
09-Apr-18	15-Apr-25	7.77%	Qtrly	Jr Subordinated	Banks	05-Sep-24	16-Sep-24
15-Nov-19	20-Apr-27	7.37%	Qtrly	Jr Subordinated	Banks	05-Sep-24	16-Sep-24
06-Apr-21	20-Oct-26	7.12%	Qtrly	Jr Subordinated	Banks	05-Sep-24	16-Sep-24
01-Apr-22	15-Jun-29	7.12%	Qtrly	Jr Subordinated	Banks	05-Sep-24	16-Sep-24
16-Nov-22	15-Jun-28	7.22%	Qtrly	Jr Subordinated	Banks	05-Sep-24	16-Sep-24
13-Jun-23	17-Jun-30	7.37%	Qtrly	Jr Subordinated	Banks		
26-Nov-20	25-May-26	8.94%	Qtrly	Jr Subordinated	Life Insurance	15-Aug-24	26-Aug-24
06-Apr-23	25-May-29	7.94%	Qtrly	Jr Subordinated	Life Insurance	15-Aug-24	26-Aug-24
15-Mar-86	N/A	7.00%	Annual	Preferred	Financial Services		
25-Jul-23	21-Jul-26	12.00%	S/A	Preferred	Machinery Manufacturing		
07-Dec-20	30-Sep-30	5.60%	S/A	Subordinated	Financial Services		
23-Dec-22	15-Jun-29	7.87%	Qtrly	Jr Subordinated	Property & Casualty Insurance		
27-Mar-24	15-Dec-30	7.66%	Qtrly	Jr Subordinated	Property & Casualty Insurance		
17-Nov-23	16-Feb-29	10.85%	Qtrly	Jr Subordinated	Consumer Finance		
29-Sep-21	27-Oct-26	9.16%	Qtrly	Subordinated	Life Insurance	18-Jul-24	29-Jul-24
03-Jun-20	21-Dec-25	9.11%	Qtrly	Jr Subordinated	Banks	05-Sep-24	23-Sep-24
30-Aug-21	07-Sep-28	7.25%	Qtrly	Jr Subordinated	Banks	22-Aug-24	09-Sep-24
08-Jun-18	16-Dec-24	8.37%	Qtrly	Jr Subordinated	Diversified Banks	05-Sep-24	16-Sep-24
28-Mar-19	10-Sep-26	8.51%	Qtrly	Jr Subordinated	Diversified Banks	30-Aug-24	10-Sep-24
18-Mar-21	18-Sep-27	7.27%	Qtrly	Jr Subordinated	Diversified Banks	02-Sep-24	18-Sep-24
18-Jul-22	12-Sep-29	8.06%	Qtrly	Jr Subordinated	Diversified Banks	27-Aug-24	12-Sep-24
21-Mar-19	17-Jun-26	8.37%	Qtrly	Jr Subordinated	Banks	04-Sep-24	17-Sep-24
18-Dec-20	17-Dec-27	7.87%	Qtrly	Jr Subordinated	Banks	04-Sep-24	17-Sep-24
08-Jul-22	17-Dec-29	7.52%	Qtrly	Jr Subordinated	Banks	04-Sep-24	17-Sep-24
15-Sep-23	17-Sep-30	7.17%	Qtrly	Jr Subordinated	Banks		
07-Jun-24	17-Mar-32	7.06%	Qtrly	Jr Subordinated	Banks	04-Sep-24	17-Sep-24
24-May-05	N/A	9.22%	S/A	Preferred	Health Care Facilities & Services	26-Sep-24	21-Oct-24
15-Mar-86	N/A	5.00%	Annual	Preferred	Financial Services		
18-Dec-19	17-Jun-26	7.37%	Qtrly	Jr Subordinated	Property & Casualty Insurance	02-Sep-24	17-Sep-24
24-Sep-21	17-Jun-28	7.27%	Qtrly	Jr Subordinated	Property & Casualty Insurance	02-Sep-24	17-Sep-24
15-May-24	17-Jun-30	7.17%	Qtrly	Jr Subordinated	Property & Casualty Insurance	02-Sep-24	17-Sep-24
14-Mar-18	22-Sep-25	7.55%	Qtrly	Jr Subordinated	Banks	12-Sep-24	23-Sep-24
19-Dec-18	31-Jul-24	8.07%	Qtrly	Jr Subordinated	Banks	22-Jul-24	31-Jul-24
07-Dec-20	22-Mar-27	7.79%	Qtrly	Jr Subordinated	Banks	12-Sep-24	23-Sep-24
16-Sep-21	21-Sep-29	7.31%	Qtrly	Jr Subordinated	Banks	12-Sep-24	23-Sep-24
21-Jul-22	22-Sep-28	7.79%	Qtrly	Jr Subordinated	Banks	12-Sep-24	23-Sep-24
19-Dec-23	22-Sep-31	7.49%	Qtrly	Jr Subordinated	Banks	12-Sep-24	23-Sep-24
15-Mar-86	N/A	0.00%	S/A	Preferred	Financial Services		
14-Aug-12	N/A	0.00%	n/a	Preferred	Financial Services		

Activity

Mkt Cap (\$m)	Traded Value (\$)	Traded Volume	Number of Trades	Monthly Liquidity % ³
\$ 33.63	\$ 442,708.06	453,037	33	1.32%
\$ 10.23	\$ -	-	-	0.00%
\$ 18.67	\$ 449,956.65	177,210	13	2.41%
\$ 9.68	\$ 181,806.36	60,000	10	1.88%
\$ 13.61	\$ 11,976.54	12,691	3	0.09%
\$ 15.93	\$ 103,753.00	1,146	6	0.65%
\$ 18.98	\$ 319,429.95	3,903	18	1.68%
\$ 230.29	\$ 1,840,155.92	20,234	397	0.80%
\$ 288.75	\$ 4,653,618.96	44,997	268	1.61%
\$ 950.17	\$ 16,518,784.71	161,818	787	1.74%
\$ 1,560.00	\$ 18,364,544.30	178,371	1,981	1.18%
\$ 1,330.96	\$ 19,912,834.21	196,450	1,641	1.50%
\$ 1,517.85	\$ 34,262,804.13	339,651	1,739	2.26%
\$ 1,734.00	\$ 39,310,777.83	387,532	1,803	2.27%
\$ 380.32	\$ 7,295,463.85	96,941	502	1.92%
\$ 524.10	\$ 6,900,395.77	66,031	780	1.32%
\$ 310.80	\$ 7,148,361.48	69,655	415	2.30%
\$ 353.61	\$ 4,045,509.04	40,026	351	1.14%
\$ 271.23	\$ 2,873,246.88	27,692	206	1.06%
\$ 408.40	\$ 7,869,255.56	77,073	553	1.93%
\$ 1,387.80	\$ 22,181,224.04	218,280	1,340	1.60%
\$ 1,720.62	\$ 18,416,467.09	178,813	1,306	1.07%
\$ 1,207.73	\$ 16,142,930.50	158,168	1,107	1.34%
\$ 1,788.33	\$ 21,823,367.27	214,160	1,505	1.22%
\$ 1,816.13	\$ 20,608,784.66	201,845	1,455	1.13%
\$ 1,625.49	\$ 27,598,678.63	267,470	1,961	1.70%
\$ 401.56	\$ 4,300,132.35	41,288	669	1.07%
\$ 361.06	\$ 5,472,914.80	53,189	435	1.52%
\$ 0.18	\$ -	-	-	0.00%
\$ 44.00	\$ 680,271.80	2,044,533	38	1.55%
\$ 5.70	\$ -	-	-	0.00%
\$ 517.25	\$ 7,811,729.34	76,179	674	1.51%
\$ 354.48	\$ 15,586,020.19	153,984	884	4.40%
\$ 82.12	\$ 1,084,833.45	9,962	86	1.32%
\$ 146.03	\$ 2,025,414.55	21,131	235	1.39%
\$ 672.44	\$ 12,455,538.08	119,511	972	1.85%
\$ 672.53	\$ 10,043,499.81	98,229	753	1.49%
\$ 1,017.20	\$ 18,039,513.26	177,094	1,133	1.77%
\$ 950.77	\$ 13,183,721.98	126,686	1,377	1.39%
\$ 743.72	\$ 8,719,596.49	85,624	610	1.17%
\$ 787.95	\$ 13,355,800.12	128,199	731	1.70%
\$ 1,958.77	\$ 22,541,094.76	217,007	1,602	1.15%
\$ 2,495.96	\$ 30,067,596.52	289,247	2,057	1.20%
\$ 2,089.80	\$ 23,969,138.98	232,717	1,444	1.15%
\$ 1,278.75	\$ 29,777,277.35	294,414	1,422	2.33%
\$ 1,006.20	\$ 44,035,026.71	439,507	1,921	4.38%
\$ 275.60	\$ 3,801,436.15	35,924	290	1.38%
\$ 0.08	\$ -	-	-	0.00%
\$ 400.67	\$ 4,216,548.40	41,245	528	1.05%